



become a smart factory!
advanced analytics
to convert into a data driven company

TABLE OF CONTENT

01

ABOUT US

our core business

02

CEO MESSAGE

our commitment

03

MISSION & VISION

innovation and agile
methods

04

OUR HISTORY

since 2011

05

materialSUITE TM

the customised
software

06

CUSTOMERS

we design together



ABOUT US.



Logikamente s.r.l. is a software house based in Ferrara, active in the development of customised software and management systems for manufacturing companies.

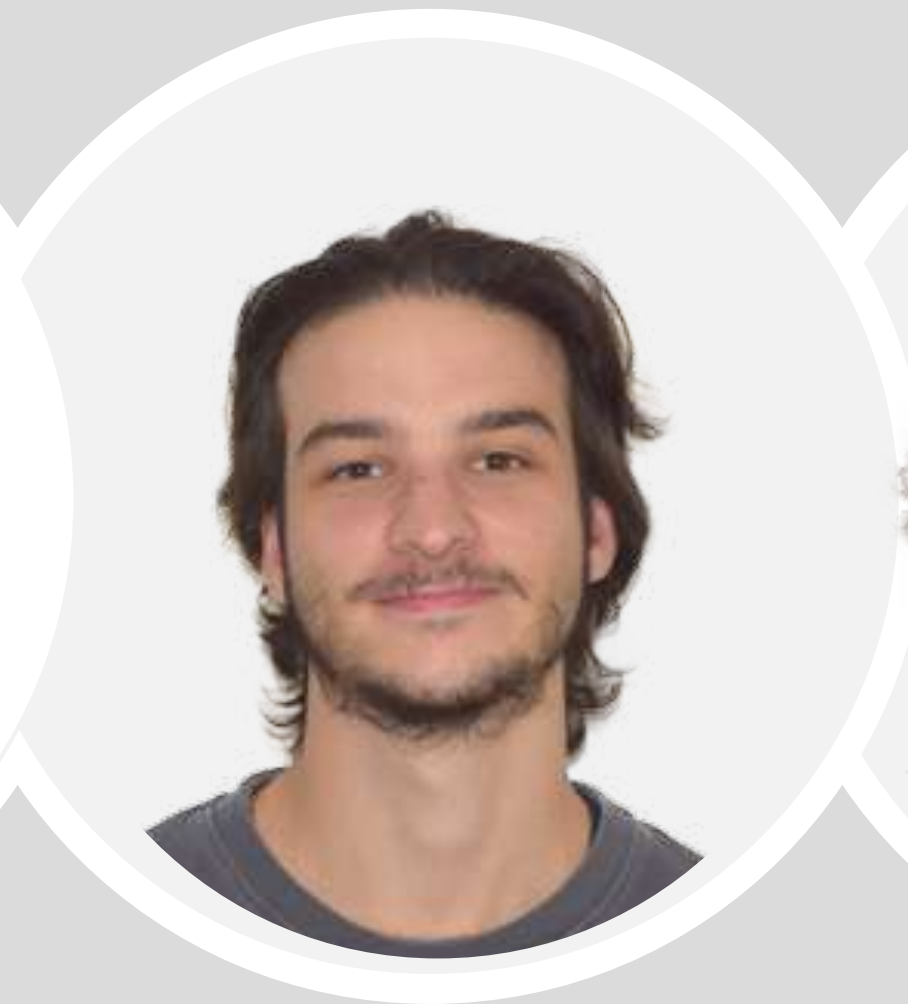
Through **materialSUITE®**, a set of software solutions that make factory production and operational processes more efficient, Logikamente guides companies through the digital processes that transform traditional plants into Smart Factories.

MEET THE TEAM



CEO

Stefano Ciammarughi



team leader

Nicolò Ferraresi



team leader

Denise Lipparini



developer

Matteo Chiozzi



operations

Fabio Bolognesi

MEET THE TEAM



developer

Edoardo Bizzi



UI designer

Ilenia Verzola



financial

Monica Calderoni



sales

Marco Tebaldi



marketing

Elena Marangon



MESSAGE FROM THE CEO.



STEFANO CIAMMARUGHI

CEO & FOUNDER

Not long after logikamente's 10 year anniversary, I feel the need to change gear. I owe it first and foremost to the company I founded on February 11th 2011, but as you know, companies are made by the people who feel the responsibility of completing their duties entrusted by clients on a daily basis.

That is why I owe them a clear direction, vision, albeit in the short term, of clear, achievable and measurable objectives that will lead the organisation to increasingly international objectives.

I have always tried, for over a decade, to give my collaborators a vision, a professional goal to be achieved at all costs, overcoming mental limits and, above all, finding within their own means, often hidden, that the human mind disguises, giving us the feeling of not being able to do it.


In this new era, if it's true that business must be data driven, then it means that the company must also be led by analytically designed actions, abandoning the needle in a haystack approach.



MISSION AND VISION.

MISSION & VISION

Hello! We are logikamente.



We automate production processes with management softwares within the manufacturing companies, promoting intelligent resource management and distinguishing ourselves with professionalism, dedication and availability.

We spread the software culture so as to become the reference point for this who need support during the industrial digitalisation process and be faithful companions for those already in the 4.0 reality.

We produce innovation after adopting the agile methodology: people always at the center, rejects managed quickly, work shaped on context conditions.

TRAITS

Hello! We are logikamente.

E

ENTHUSIASM

Our actions are driven by passion. We give the right energy to each project to achieve the objectives set by the clients.

V

VERSABILITY

We adapt and shape the different solutions based on the customer's needs, creating completely tailor-made products.

U

UNIQUENESS

We dedicate time, attention and commitment to each project to create exclusive and original experiences.

A

APPROACH

We have already achieved so many goals, but we still see many goals to be conquered to take the customer to new horizons.

A large, light gray gear graphic is positioned in the background, partially obscured by the text. The gear has a central circular hub and several teeth. The word "HISTORY." is printed in a bold, dark blue font across the middle of the gear.

HISTORY.

OUR HISTORY

Hi! We are logikamente.

Since 2011 we have written many lines of code and with them also our path. Our history begins as a web agency, at the time we were located in Ferrara's historical city center, but with the passing of time that denomination was no longer adequate. We felt the need to distinguish ourselves from what was then thought of as fashionable by many. We started specialising in software and management development, our team welcomed new professionals and with them also a new office setting.

Since then we have been developing applications to automate industrial production processes, with particular attention to the manufacturing industry. Our goal is to accompany our customers on their transition and digitalisation journey, a journey that highlights the importance of data and organisation with the aim of improving the processes within their company.

2011

foundation year

+400

assisted customers

+8000

solved assistance tickets

+650

performed installations

HISTORY

Software is the future

software is
the future

01/01 **2015**



31/12 **2022**

startup
company

focus on **software house**

4 developers

20 web applications

10 active customers

technology
company

focus on **technology**

10 developers

+1 suite, **+20** modules

400+ tailored software



materialSUITE™

materialSUITE™, LET'S GO TO THE SMART FACTORY!

manufacturing operations management (**MOM**) software



MES

progress and traceability



WMS

intelligent warehouse
management



SCH

plan and schedule
work plans



MTM

Methods Time
Measurement



CUSTOM

product configurator and
estimator

DIGITAL SMART FACTORY

materialSUITE™ is the MOM suite for analysis, control and communication within the factory

MES production progress:
increase productivity and
reduce waste

SCH scheduling:
program the
processing phase
quickly and intuitively

MACHINE link 4.0:
bidirectional
machines and
software

WMS warehouse
management:
intelligent storage and
picking precision

MTM time recording:
machine (OEE) and
human (OLE)

CUSTOM formulate the
best quotation based on
delivery times and costs



ADVANCED ANALYSIS AND MONITORING

manufacturing operations management (MOM) software

OEE and OLE
analysis

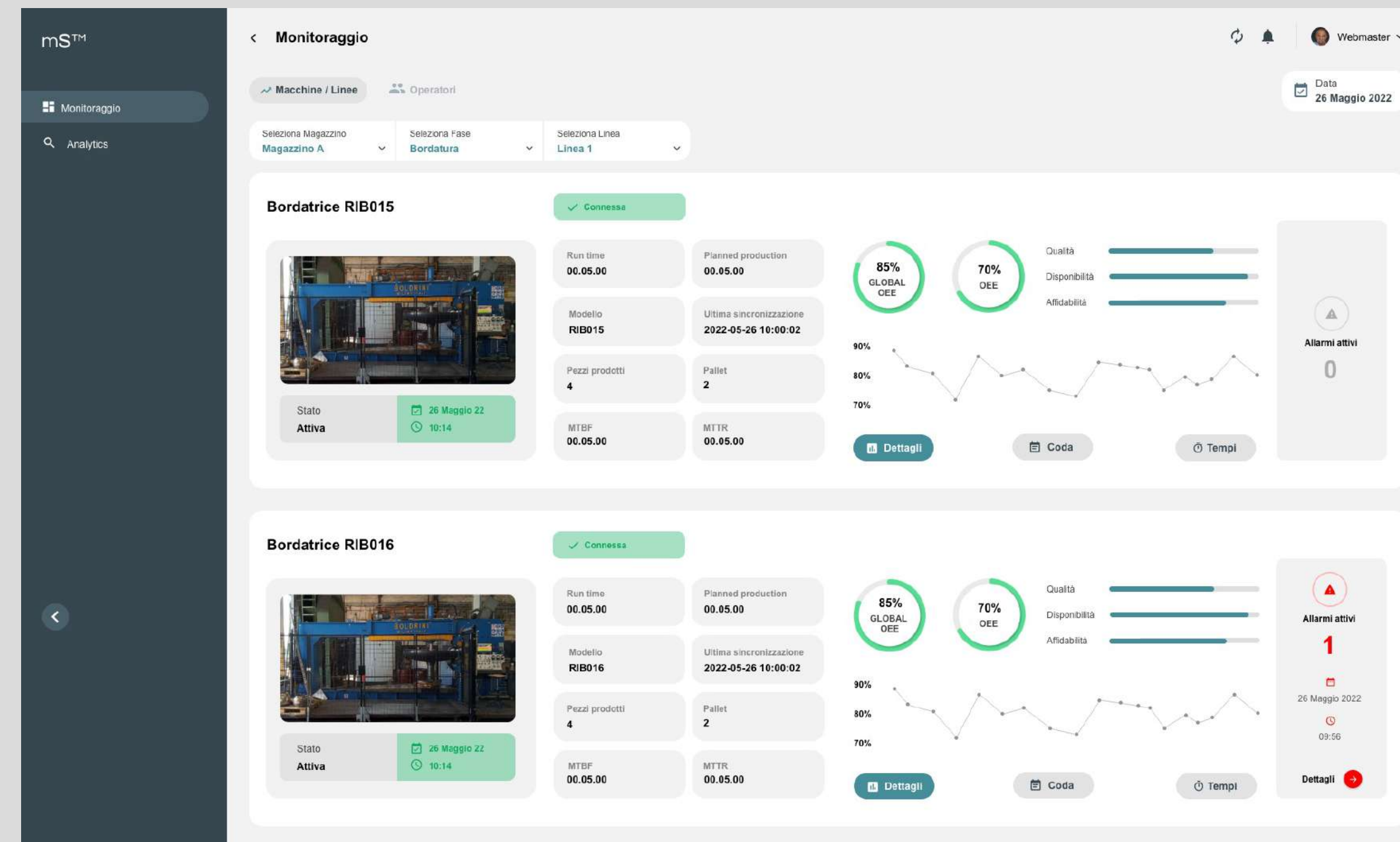
01

machine downtime
reduction

02

real-time data

03

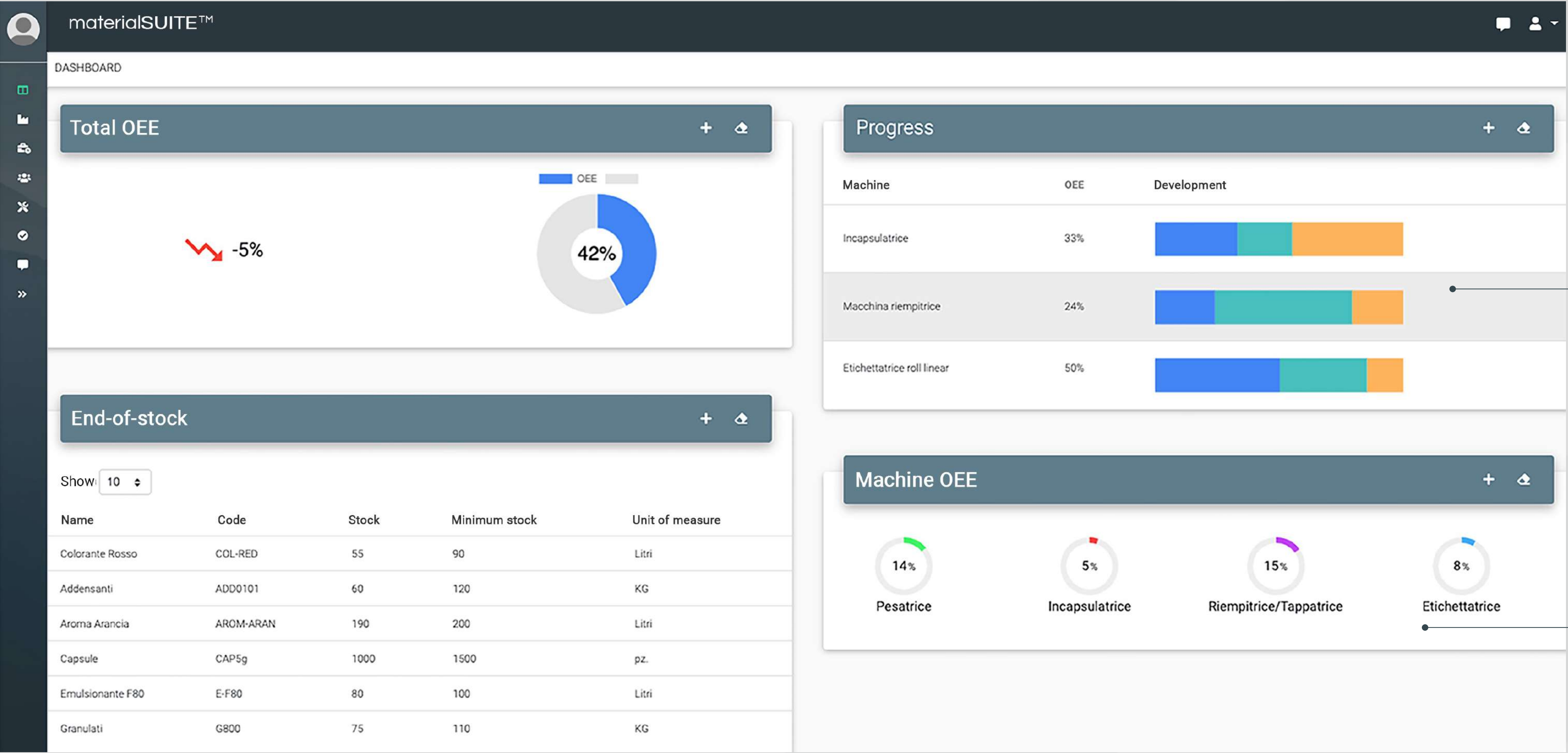


data history

04

MES

progress and traceability



dashboard progress

machine productivity status provided using the data acquired by the PLC

dashboard bar

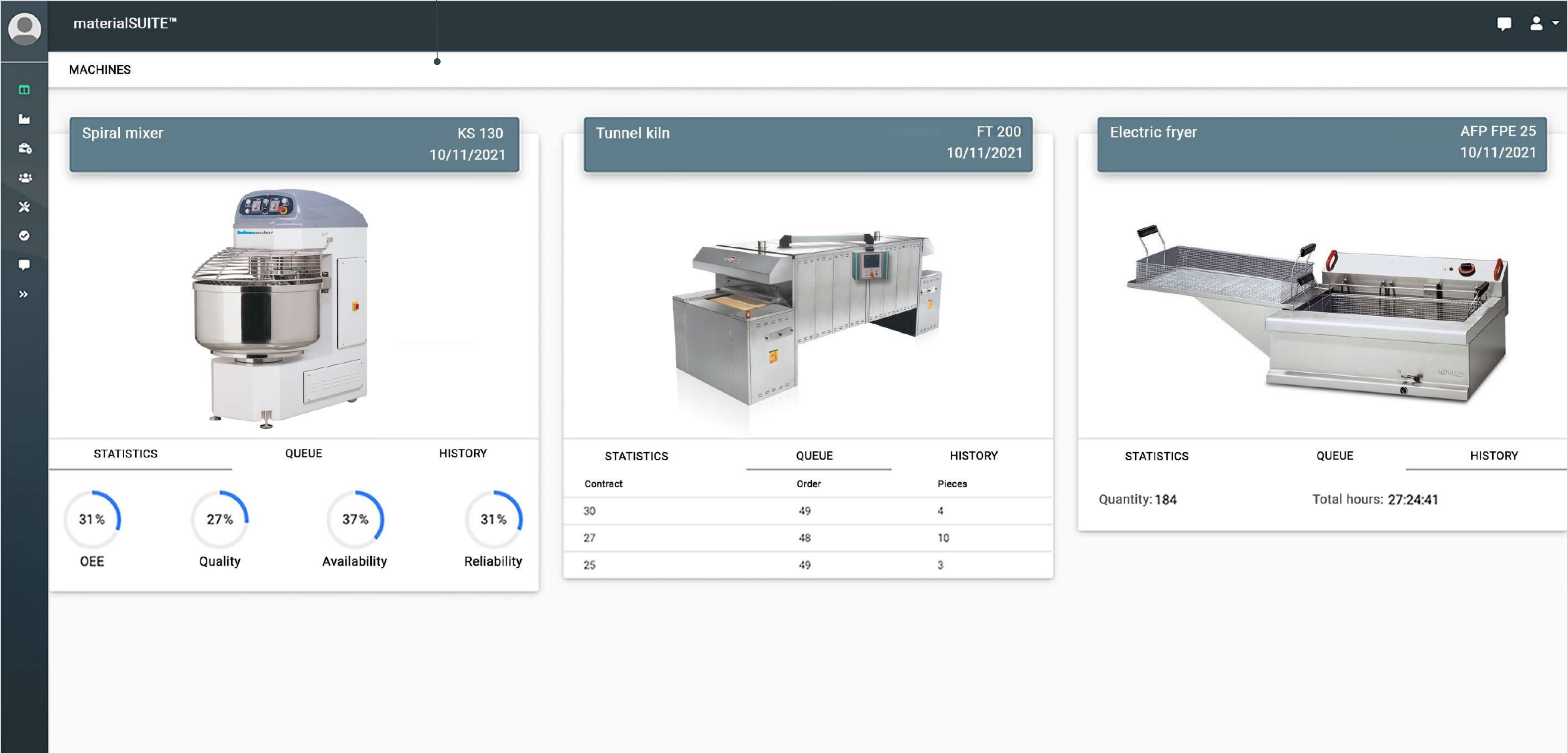
OEE index divided per machinery type

MES

machine in the production plant

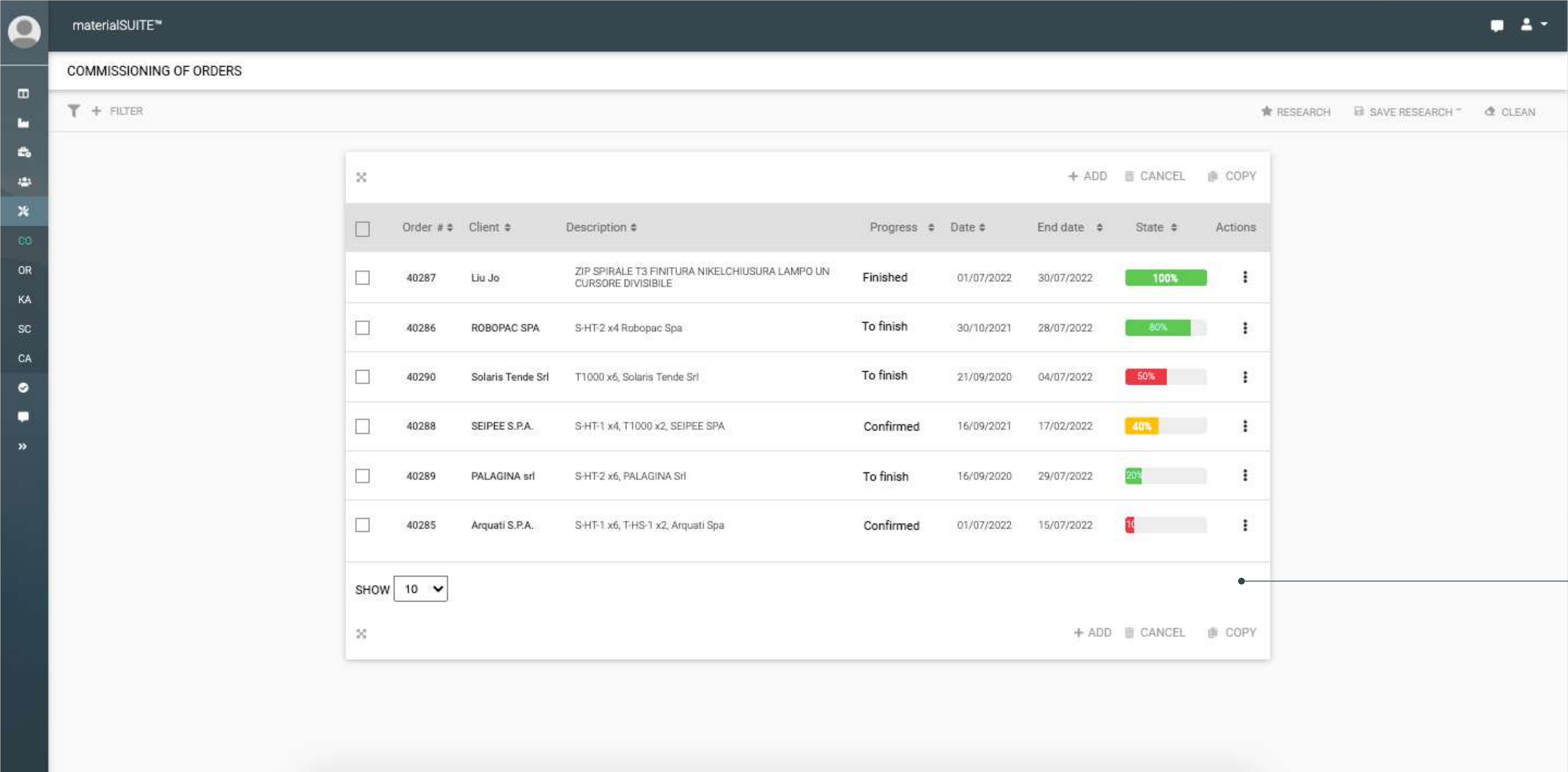
machine

a fully responsive area with view and filters, that processes in real time data for each machine, providing information about production KPIs, the queue and the order the machine is working on



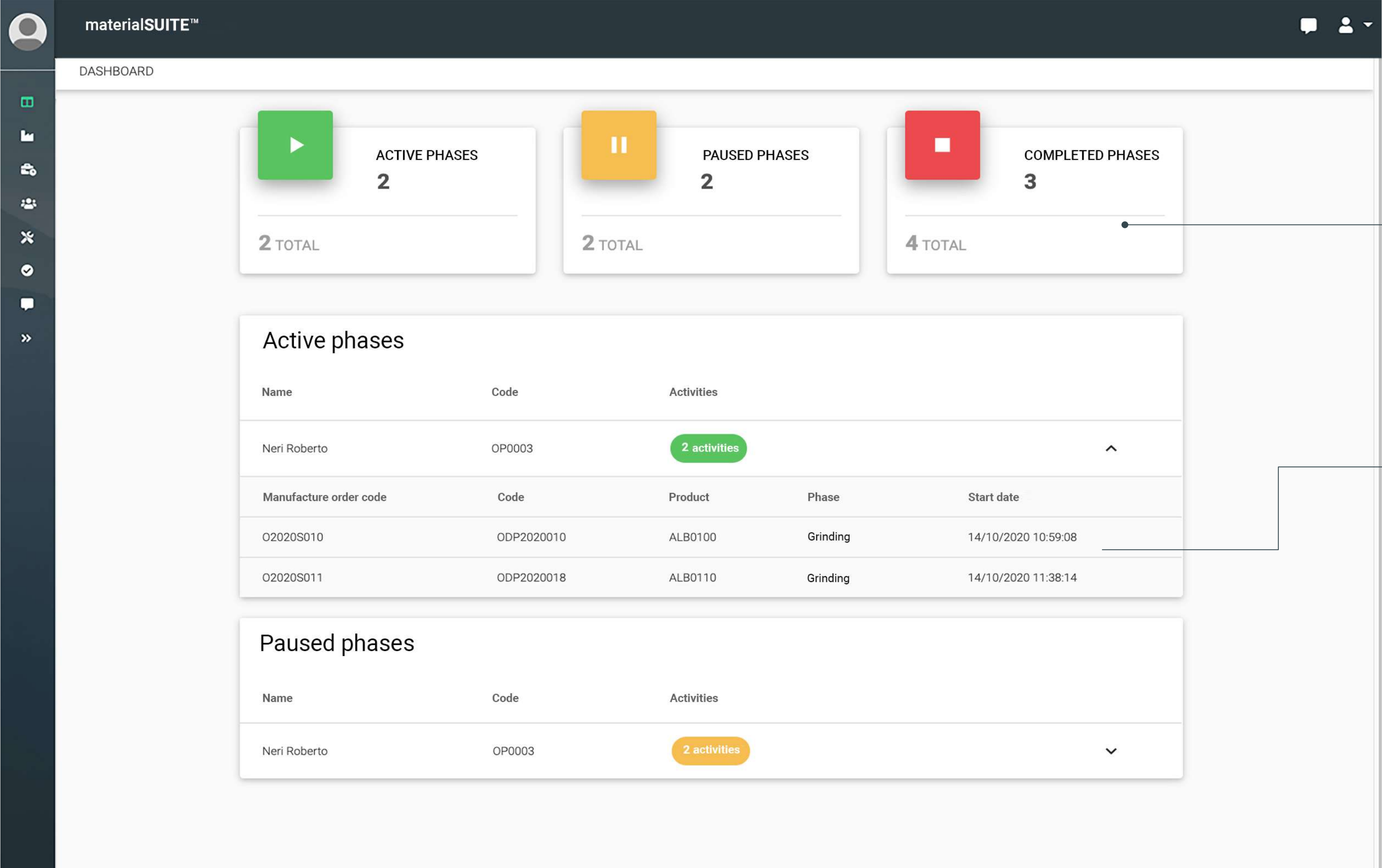
MES

dashboard production progress



completion status

overall delay calculation for each job, showed on a percentage bar using traffic light colours



materialSUITE™

DASHBOARD

ACTIVE PHASES

2

PAUSED PHASES

2

COMPLETED PHASES

3

2 TOTAL

Active phases

Name
Neri Roberto
Manufacture order code
O2020S010
O2020S011

Paused phases

Name	Code	Activities
Neri Roberto	OP0003	2 activities

Synchronization

Select the action to perform

☐ Import

☐ Export

CANCEL

DO

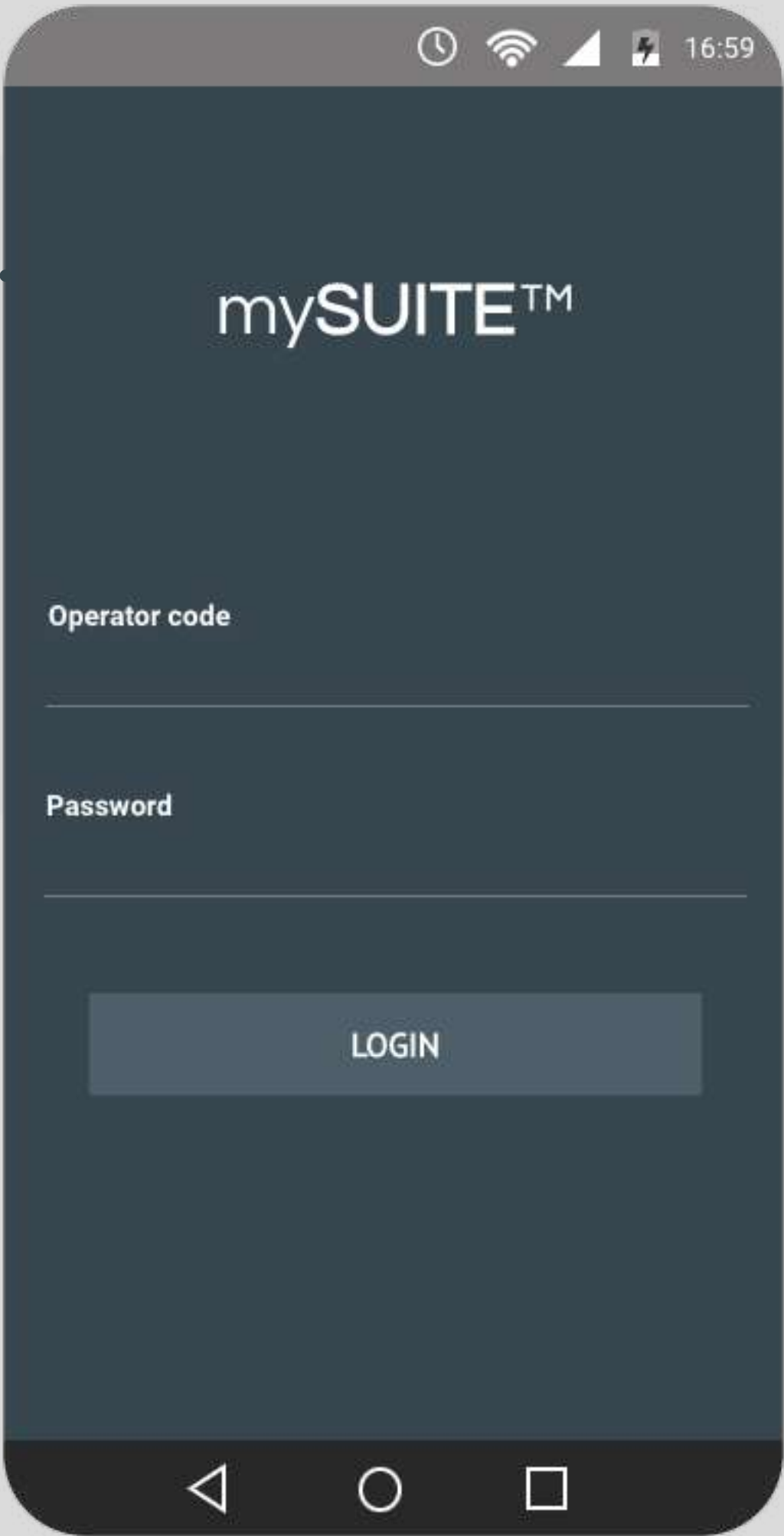
management synchronisation

mySUITE app

authentication and take in charge of manufacturing orders

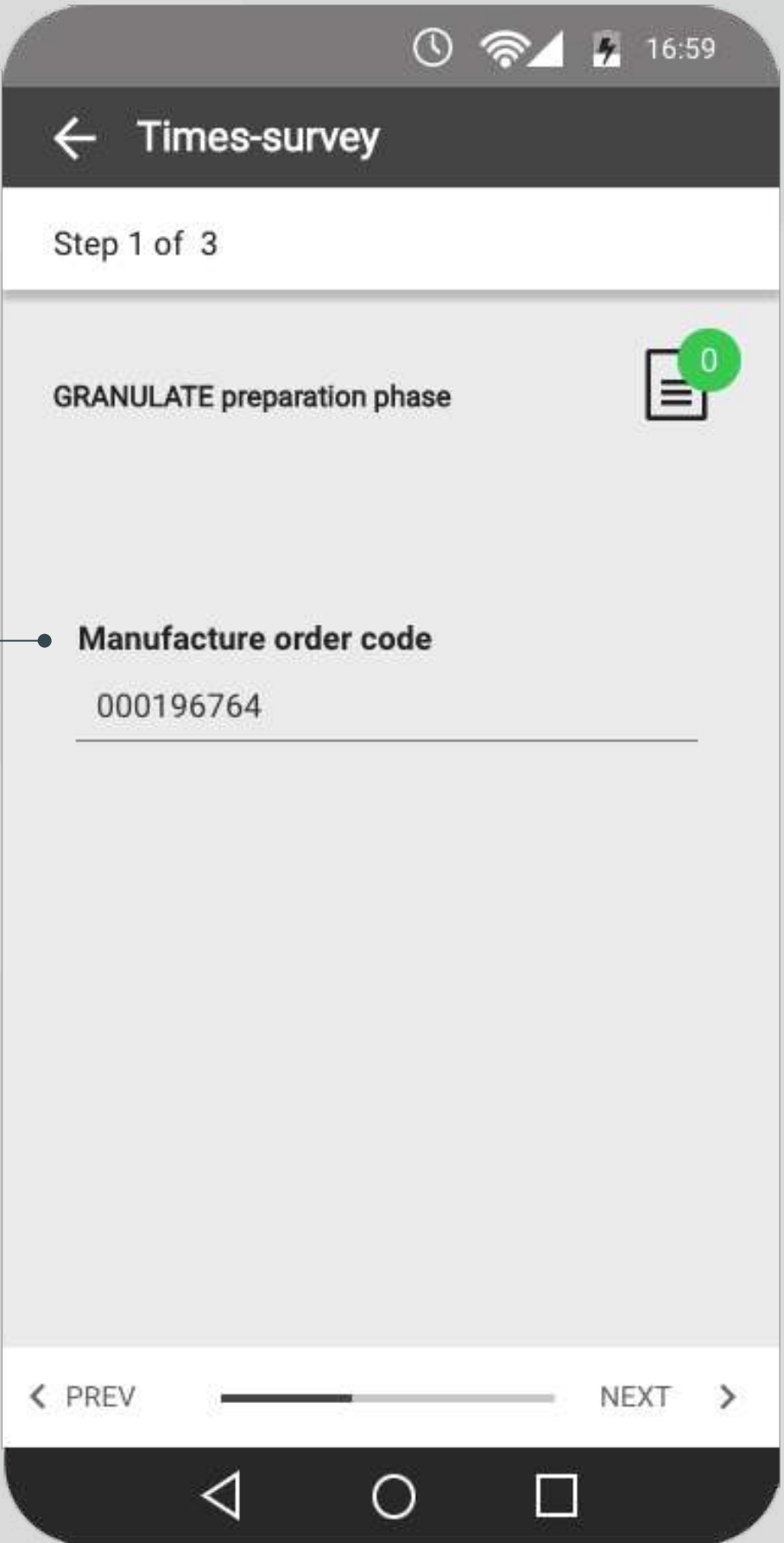
operator access

operator recognition using authentication



batch/production reading

the operator assigns orders



camera/laser/keyboard

order reading mode



mySUITE

processing steps and times

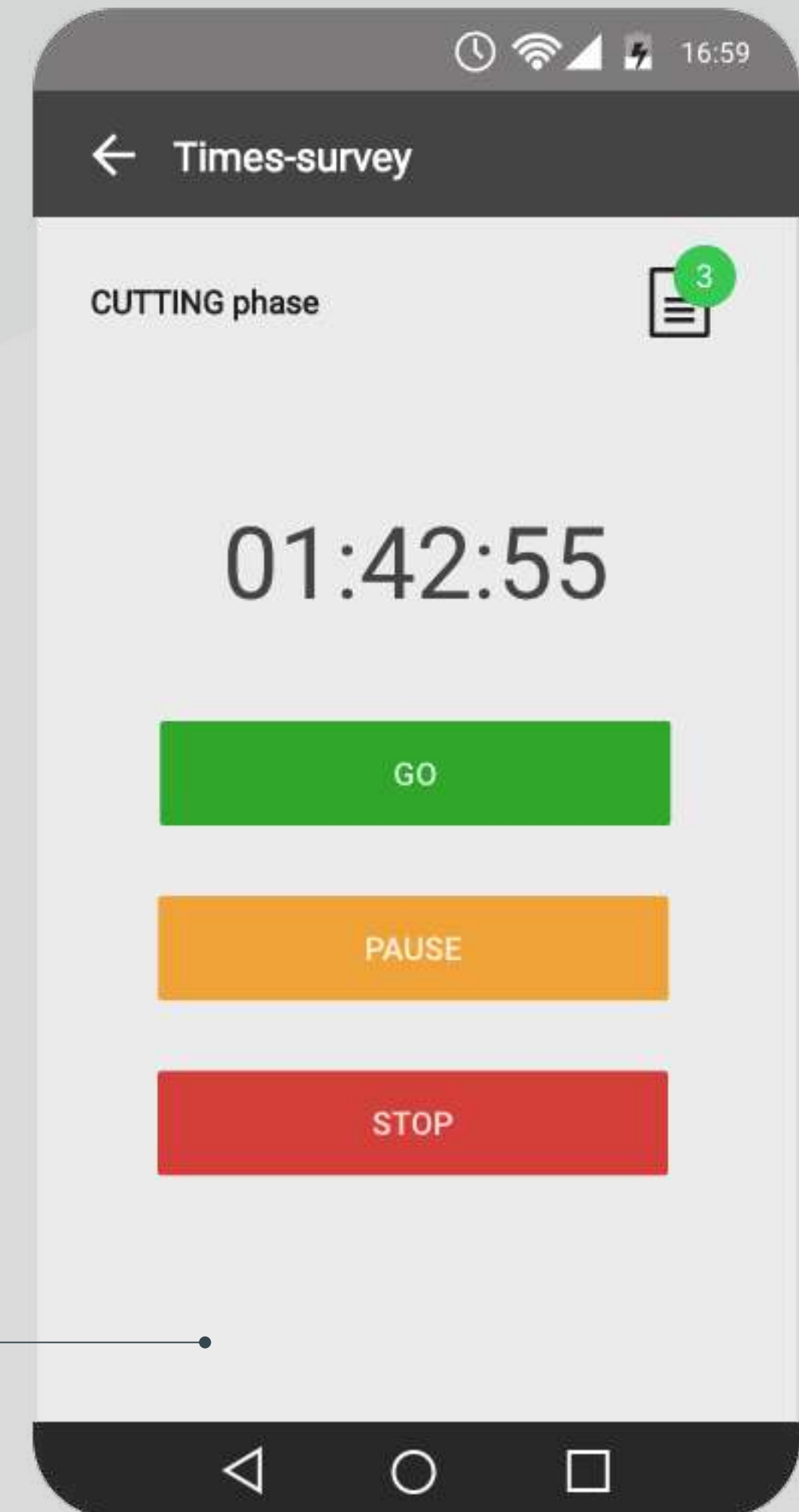
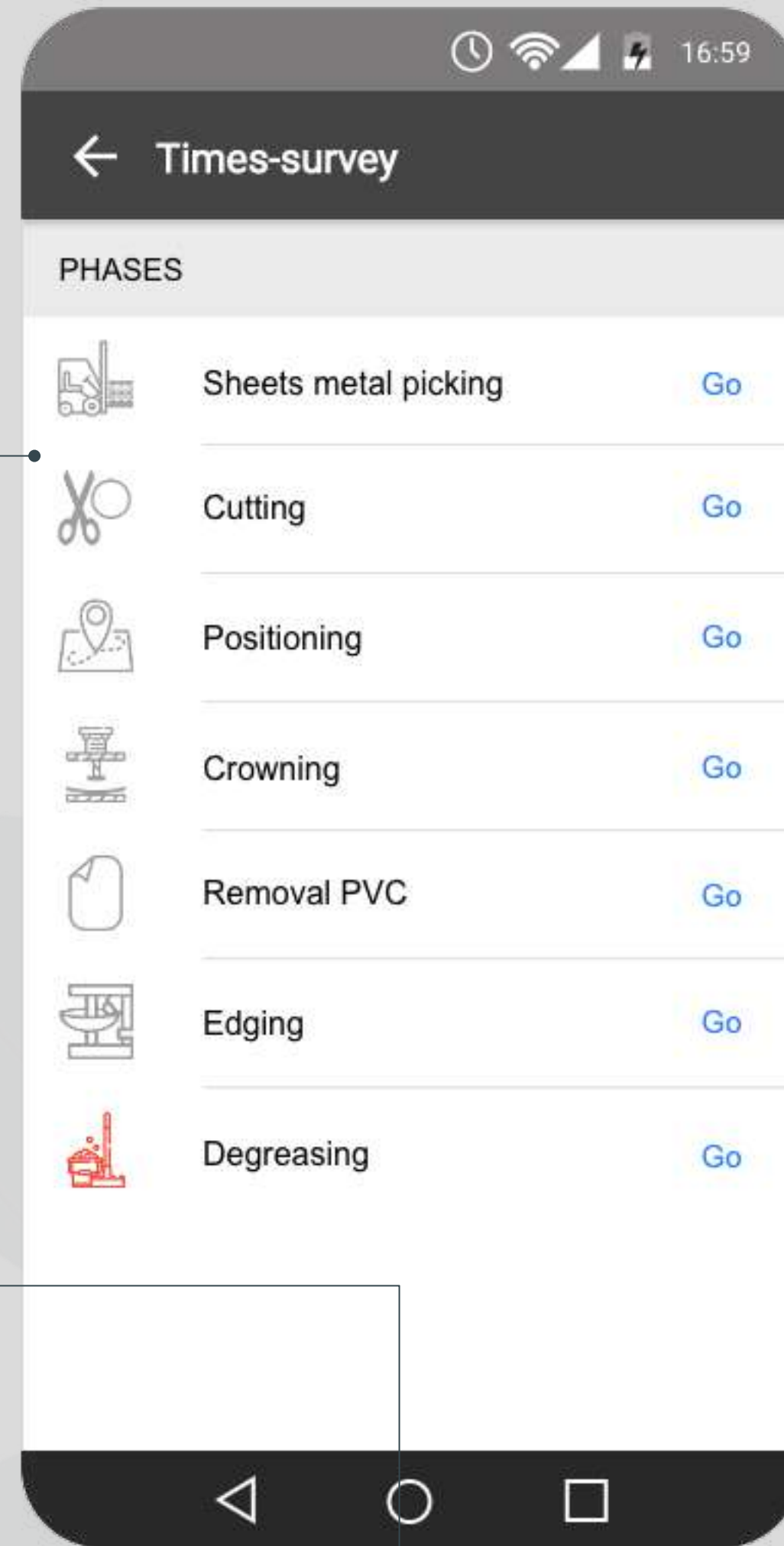
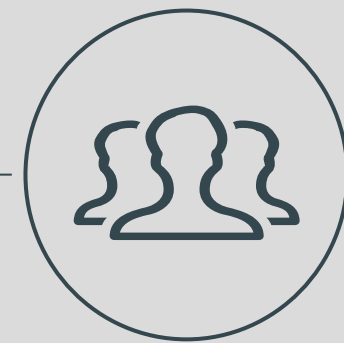
phase choice

the operator chooses which work phase to assign to each order



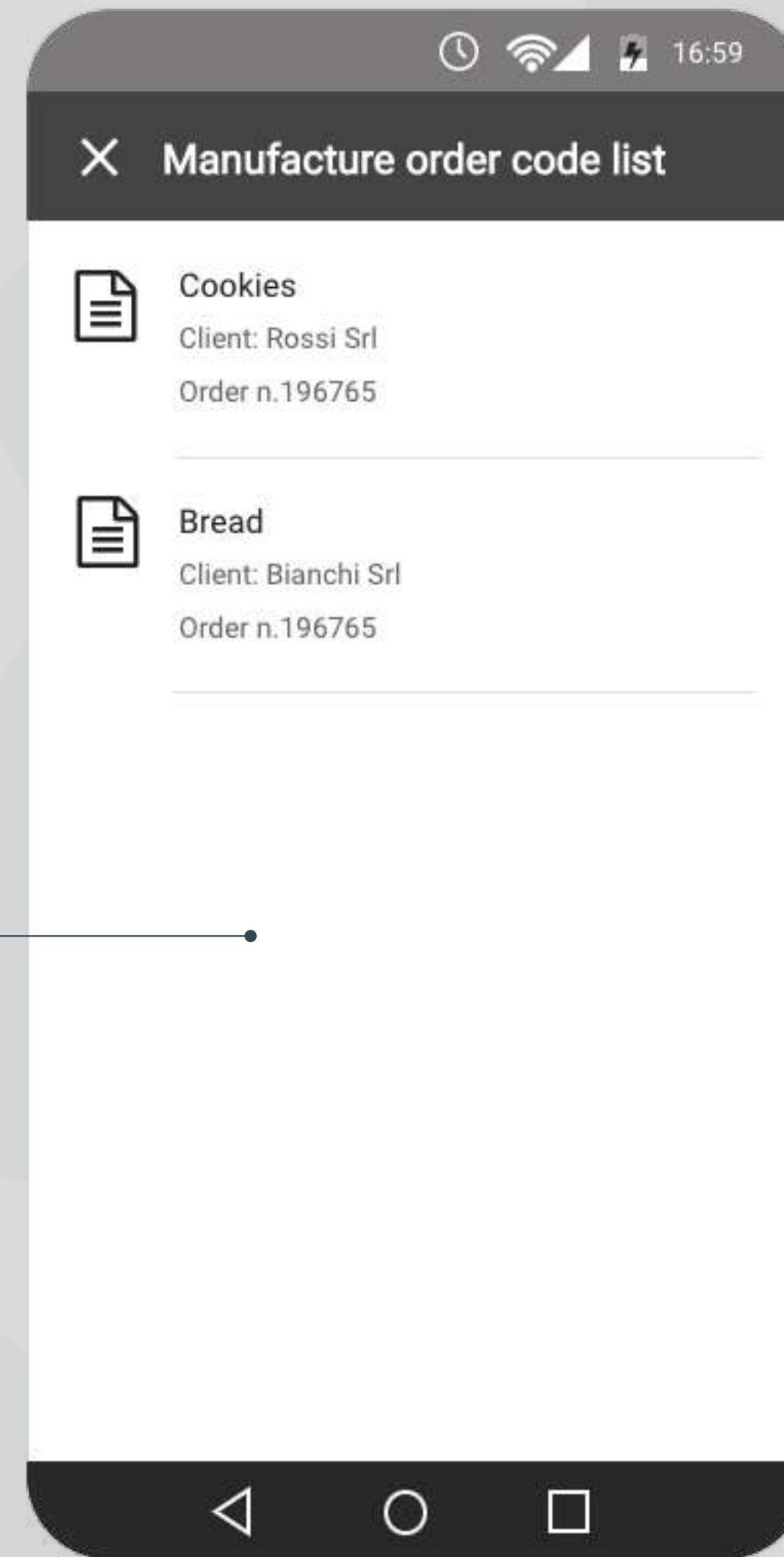
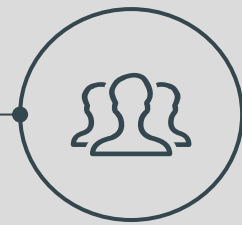
start&stop

the operators report times taken for each production order



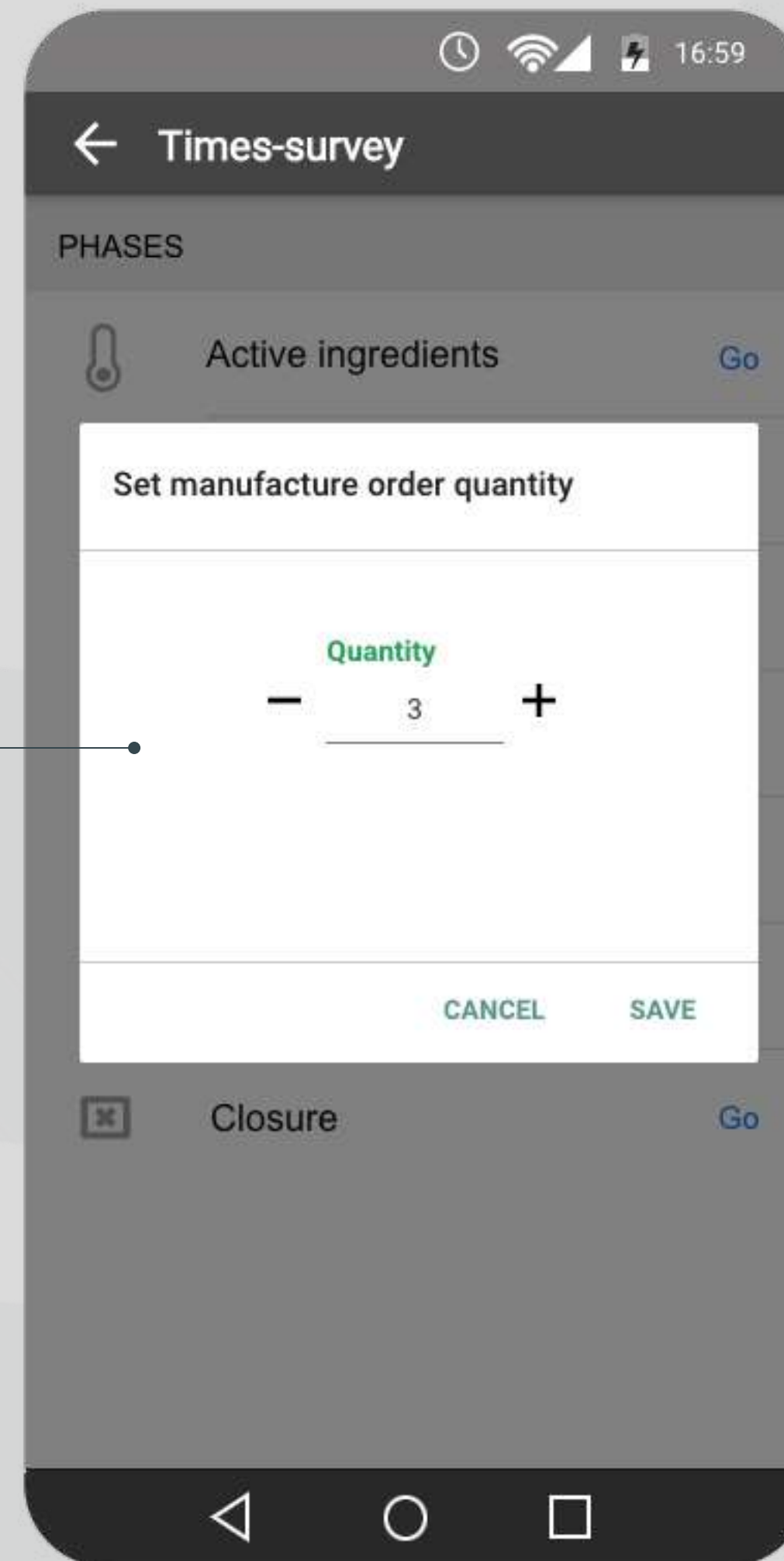
production order/ batch choice

ability to take charge of several production orders, at the same time, if the action to be performed is the same for all



production payout

operator-declared number
of items produced



WMS

warehouse management: intelligent storage and picking precision

supplies

detection table of codes given late throughout the supply chain

picking accuracy

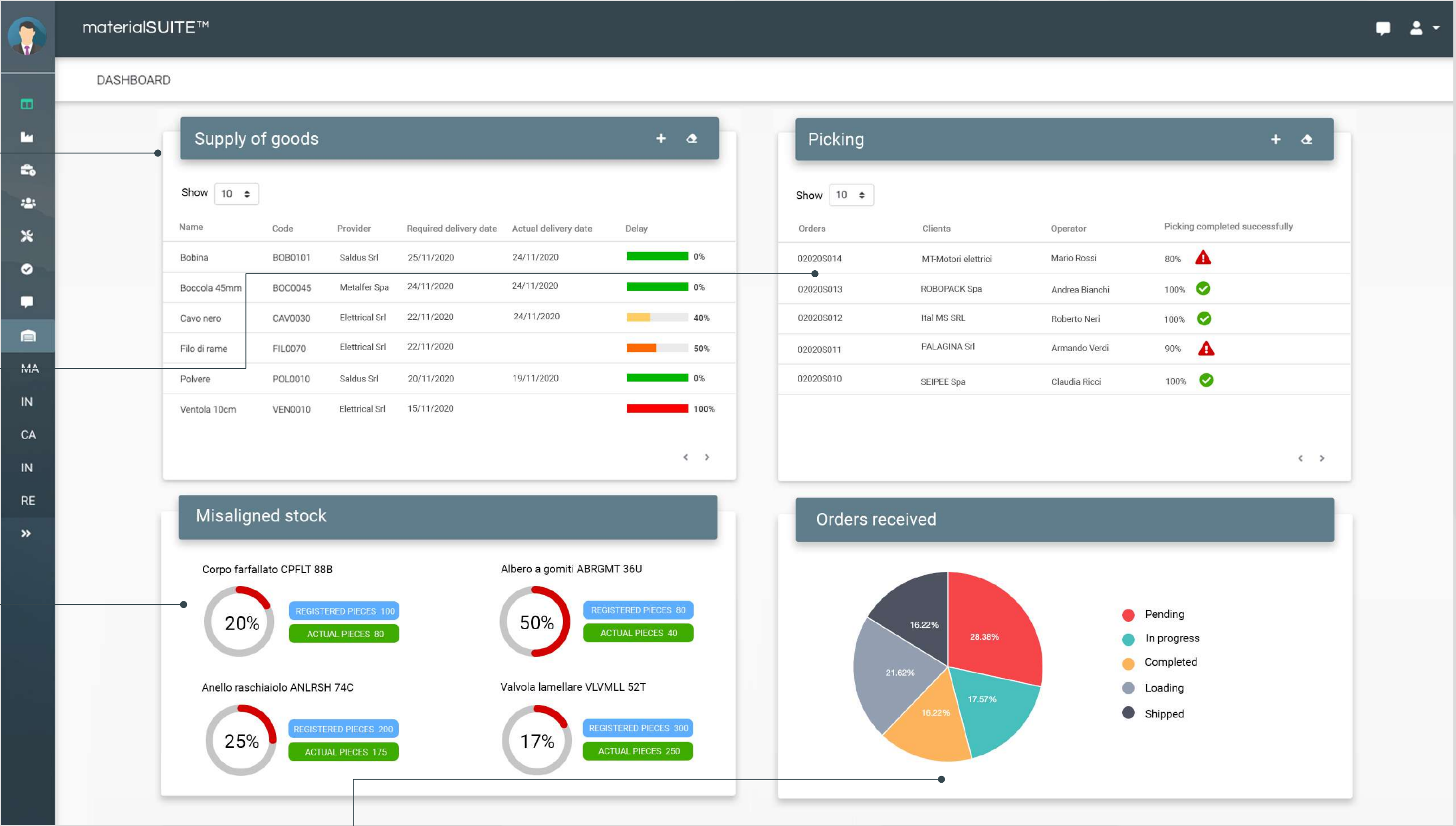
table of reference codes with correct picking percentages

stock

for every negative reference evaluation, the difference between registered stock and actual stock is shown

orders

pie chart of picking order status

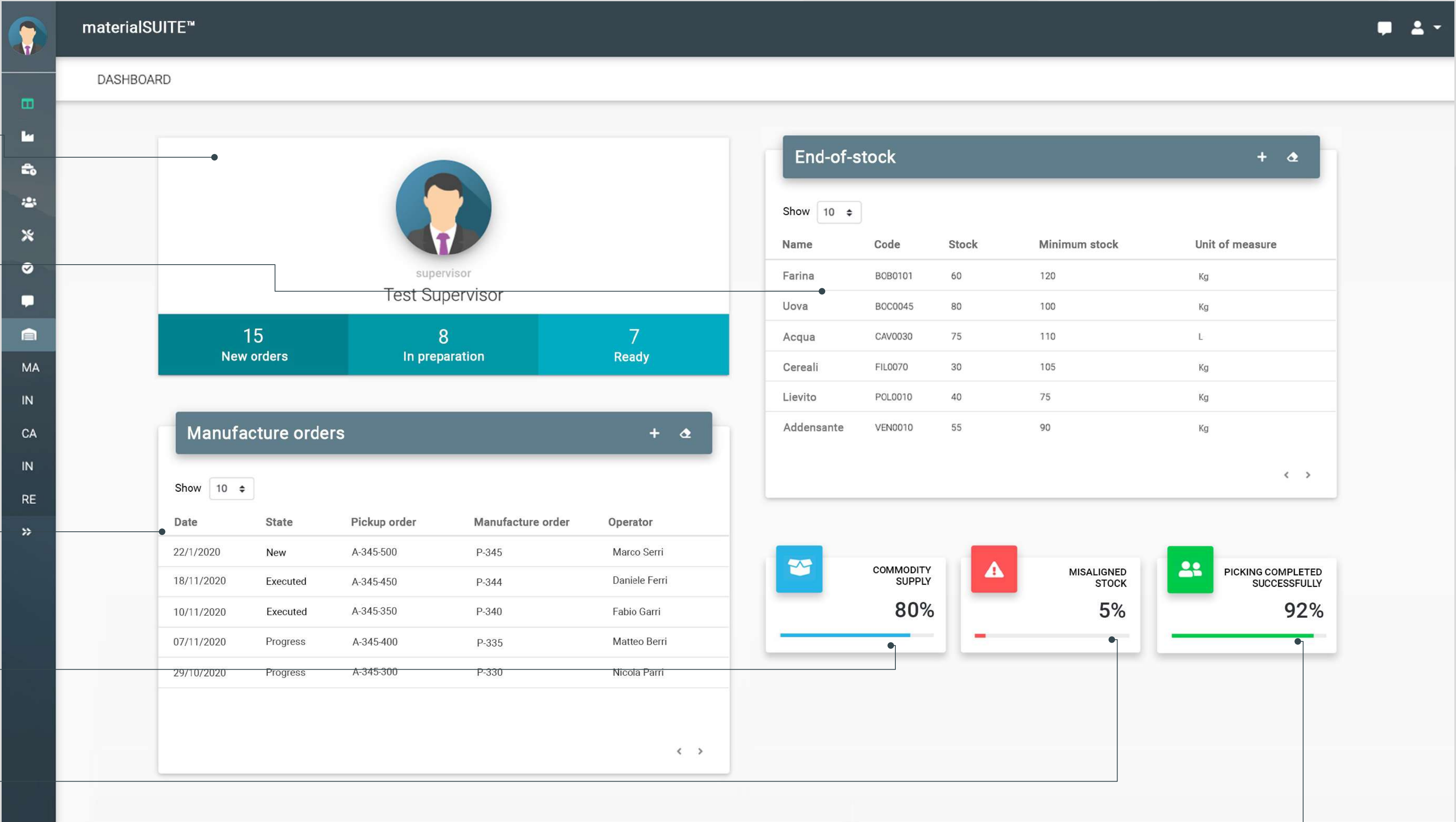


order status summary
number of picking orders based on their status, e.g. new, in preparation and ready

under stocked
warning table for understocked materials

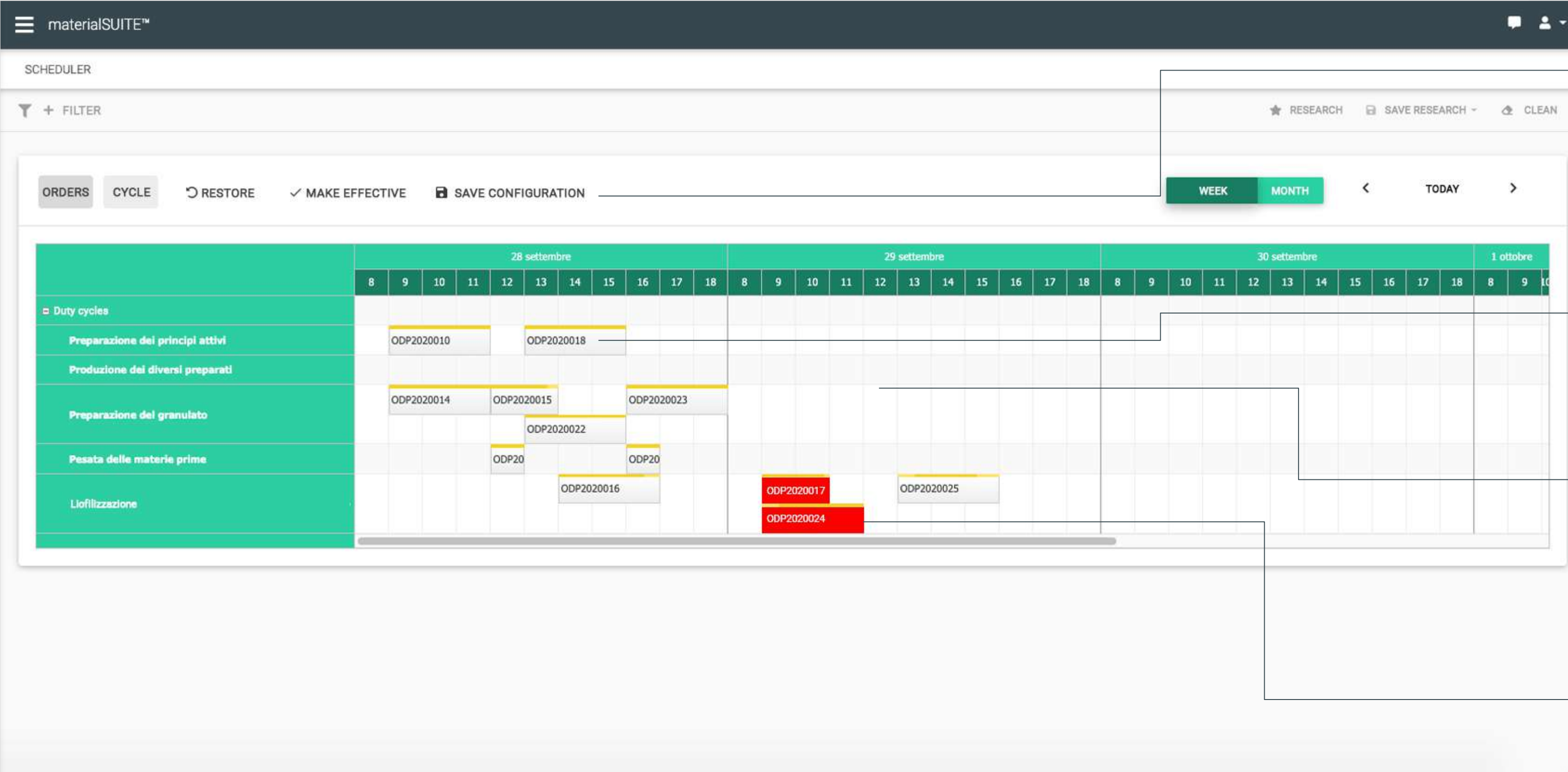
picking order details
table of picking order linked to each production order

stock KPI from left to right
percentage of suppliers shipment punctuality
percentage of general stock difference, if there are no inventory inconsistencies
percentage of picking accuracy without errors and within the required time frame



scheduler

plan and schedule work plans



optimise production thanks to the scheduler

personal data configurations with detailed of assignments of cycles and centres

drag and drop sequence

personal data with detailed of assignments of cycles and centres

calendar view

of personal data with detailed assignments if cycles and centres

personal data overlap management

with detailed assignments of cycles and centres

machine link 4.0

bidirectionality and software

materialSUITE™

MANUFACTURING ORDERS

10 selected columns

+ ADD

DELETE

COPY

PRINT

	ID	Batch	Date	Client	Product	State	Selected	Discarded	Controls	Actions
<input type="checkbox"/>	12	123	08/06/2022 08:42:05	Logikamente SRLs	456	Ready				⋮
<input type="checkbox"/>	10	U8457	21/02/2022 10:31:17	ASS. DF srl	Ceci	Ready				⋮
<input type="checkbox"/>	9	ORZO-d27	20/01/2022 11:51:30	Logikamente SRLs	Orzo	Ready				⋮
<input type="checkbox"/>	8	CECI-d26	20/01/2022 10:57:44	ASS. DF srl	Ceci	Ready				⋮
<input type="checkbox"/>	6	sil01-27x	27/01/2022 08:41:22	Logikamente SRLs	Ceci	In progress	309 Kg 95.8 %	13.4 Kg 4.2 %	<div>✓ ON</div> <div>✗ OFF</div>	⋮
<input type="checkbox"/>	4	ORZO-d27	20/01/2022 11:51:30	ANCICOM SRL	Orzo	In progress	28193.4 Kg 99.6 %	114.8 Kg 0.4 %	<div>✓ ON</div> <div>✗ OFF</div>	⋮
<input type="checkbox"/>	3	23158	20/01/2022 10:57:44	Logikamente SRLs	Ceci	Finished	32937.4 Kg 99.6 %	138.4 Kg 0.4 %		⋮

production orders

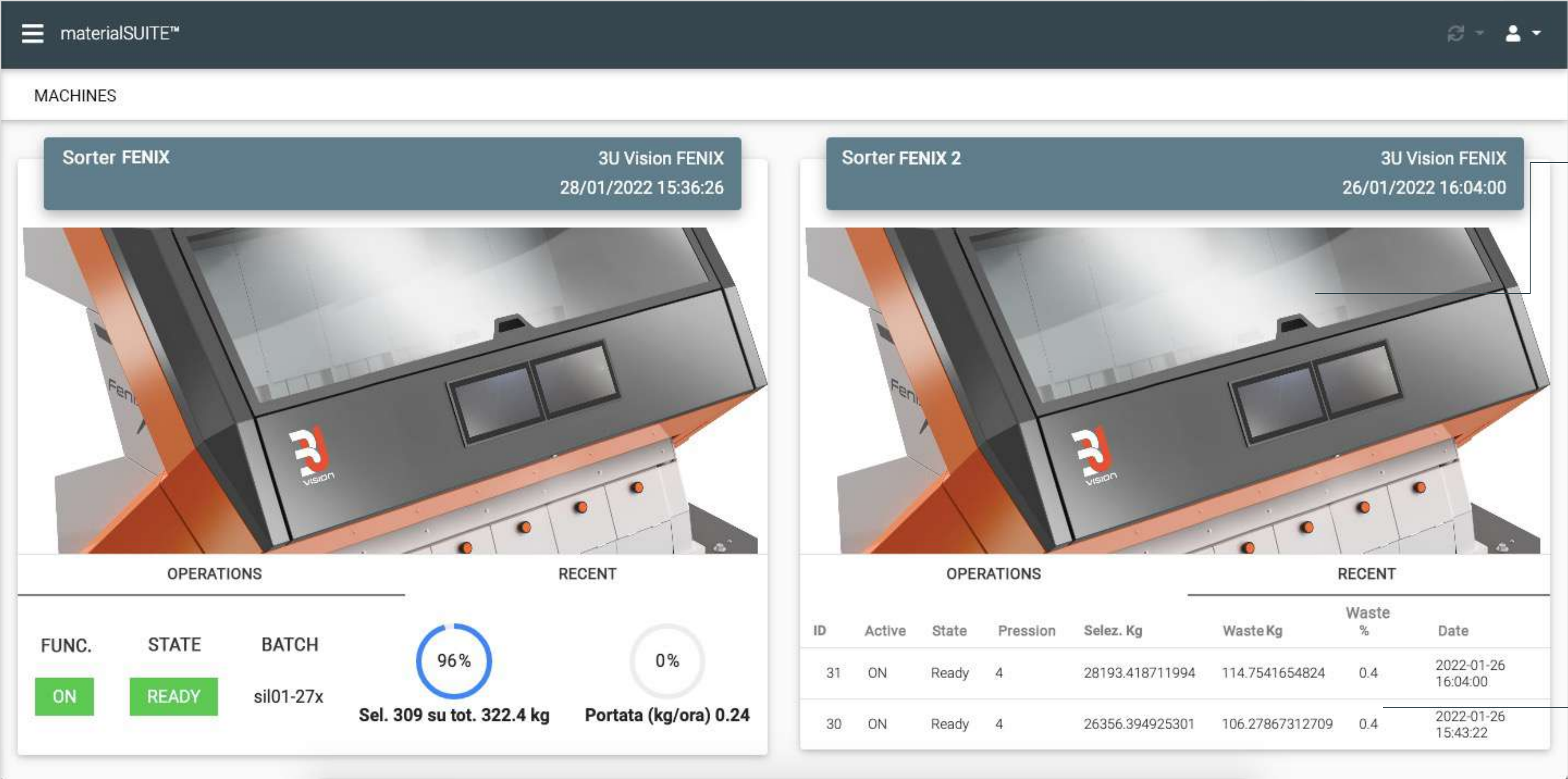
view of the production orders in execution or to be executed

remote control

order start and stop command
the machine parameters are entered when the production order is created

machine connection

3U vision configuration: the interfaces



machine interface

simple and intuitive machine dashboard with real-time indications of status, batch in progress, flow rate etc

processing history

view recent jobs performed with KPI production



CUSTOMERS.

custom

formulate the best quotation based on delivery times and costs

Temasys™

🇮🇹🇬🇧🇪🇸🇫🇷

SU

Quotes

Production

Economic performance

Clients

Financial margins

Agents

Product history

Technical data

RDO

DMS

3.2.1

Quotes

10119

TOTAL

€ 4827.99

MARGIN

31.04 %

€ 1499.00

ITEM 1

Norma

non definita

Tipo materiale

A 304 2B

ITEM 1 A

TD 1500 - 6

#18386 - 1

Quantità

3

Tipo di fondo

TD

Tipo di smusso

T2

Fornitura materiale

☒ Fornitura propria

☐ Conto lavoro

sp. minimo?

☒ NO

☐ SI

sp. minimo

6

mm

sp

6

mm

☐ Blocca sp

H Collarino (h1)

20

mm

Diametro

☒ Est.

☐ Int.

Diametro del fondo

1500

mm

Diametro del disco

1690

mm

☐ Blocca diam.

Trett. termico

Nessuno

Foro centrale

☒ A nostra discrezione

☐ No

☐ Si

H lamiera

2000 X coils

Saldatura*

Senza saldatura

rx

No

N° lastre

SAVE QUOTE

user experience is main focus
quotation configurator

custom

formulate the best quotation based on delivery times and costs

[illegible]

- **work bill data sheet**

custom

documents management

A

Amministratore

admin@admin

Management

Companies

Orders

List archive

Models archive

Models categories

List documents archive

1.3.0

Safe Nest

Orders

Order 20-001

LIST 1

LIST 2

LIST 3

LIST 4

LIST 5

+

Name	Fireproof plaster	
Type of company	Name	Detail
	Building company	
Type of work	Name	Detail
	Other	Testing
List status	Ready	
Supplier	Supplier 1	
Date added	01/10/2020	
Attachments	Lista documenti da allegare.pdf Caricato da Amministratore il 01/10/2020	
	Guida alla compilazione.pdf Caricato da Amministratore il 01/10/2020	

DOCUMENTS

PIN_2_2_2018CERT_REI

AL COLLAUDO 10/11/2020

Note :

ADVISE THE SUPPLIER

certification documentation management

the uploaded documents are evaluated and approved by the administrator

THANK YOU!



<https://logikamente.it>



via g. calvino, 38 ferrara



hello@logikamente.it



+39 0532 206288