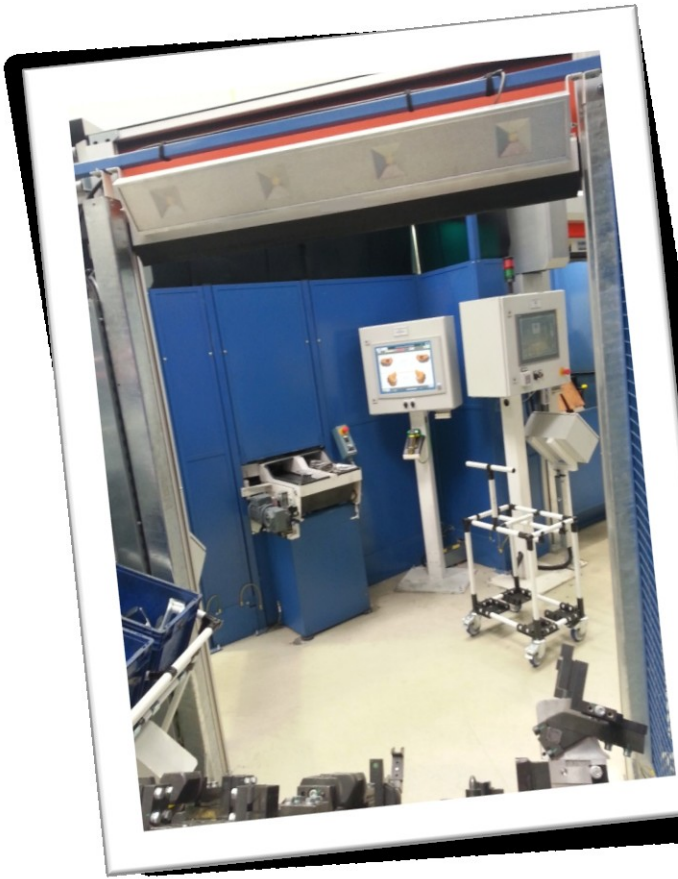




LED lighting for industrial automation







SKYLUX IP67

SKYLUX is a recessed LED spotlight, with IP67 protection, available natural and warm white (3000°K or 4200°K).

SKYLUX is suitable to be recessed both in ceilings and floors, indoor and outdoor, even in wet locations. It is perfect for on board machine punctual lighting and for every kind of direct illumination of working places.

SKYLUX is available in two versions: with three 1W power LEDs and with one 4W or 6W power LED .

SKYLUX is available with narrow 15°, medium 30°, large 60° or flood 120° beam optics.

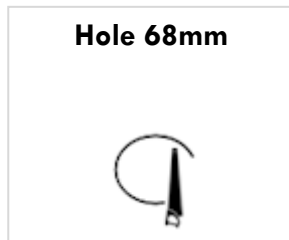
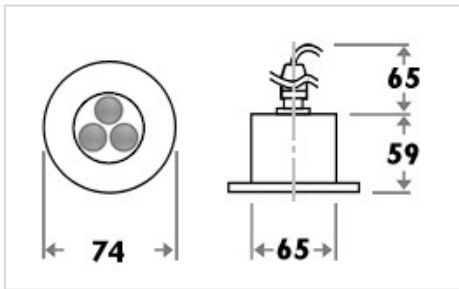
SKYLUX can be supplied with industrial standard IP68 M12 connector. The flange is available both anodized aluminum and AISI 316 INOX steel.



TECHNICAL DETAILS:

Voltage	24VDC 350mA CC 500mA CC 700mA CC	
Power	3W 3 LED @350mA 4W – 6W 1 LED COB @350mA – @500mA 6W 3 LED @500mA 8W 3 LED @700mA	
Ambient temperature	40°C	
Luminous emission	15° - 30° - 60° - 120°	
K° White	Cold	5500°K
	Natural	4200°K
	Warm	3200°K

DIMENSIONS:



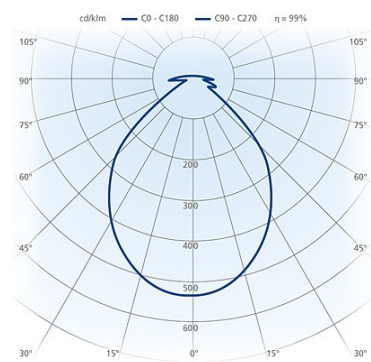
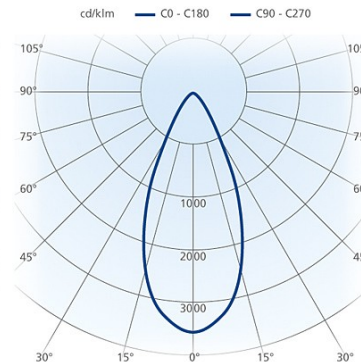
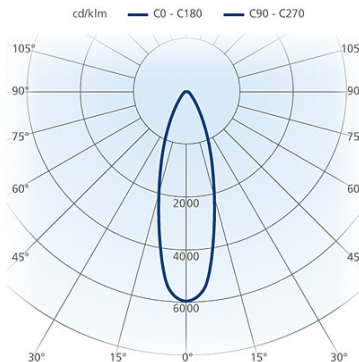
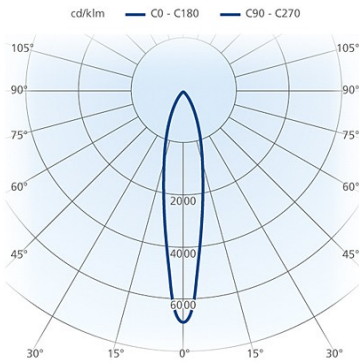
PHOTOMETRIES:

15° 8W

30° 8W

60° 8W

120° 8W



LEO MAXI

LEO MAXI 67 is suitable for the external illumination of buildings, since it is waterproof (IP67 protection).

LEO MAXI 67 is available as a recessed lamp, with brackets or with ceiling kits.

The mechanical body and the heat sink are made of machined aluminum. The lamp is available anodized black or glazed aluminum.

LEO MAXI 67 has a 24 Vdc voltage and it is supplied with industrial standard IP68 M12 connector and its connection cable.

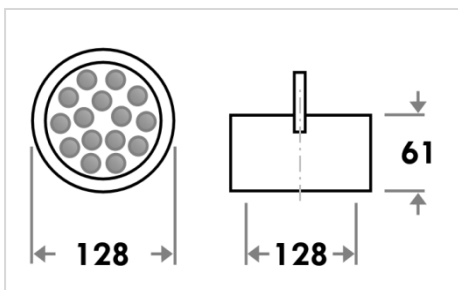
LEO MAXI 67 is equipped with a brand new control electronic onboard, and it has a microprocessor which permits autodimmuration according to the temperature detected. The lamp is protected by a humidity sensor and a cable clamp, in order to avoid overheating and condensation.



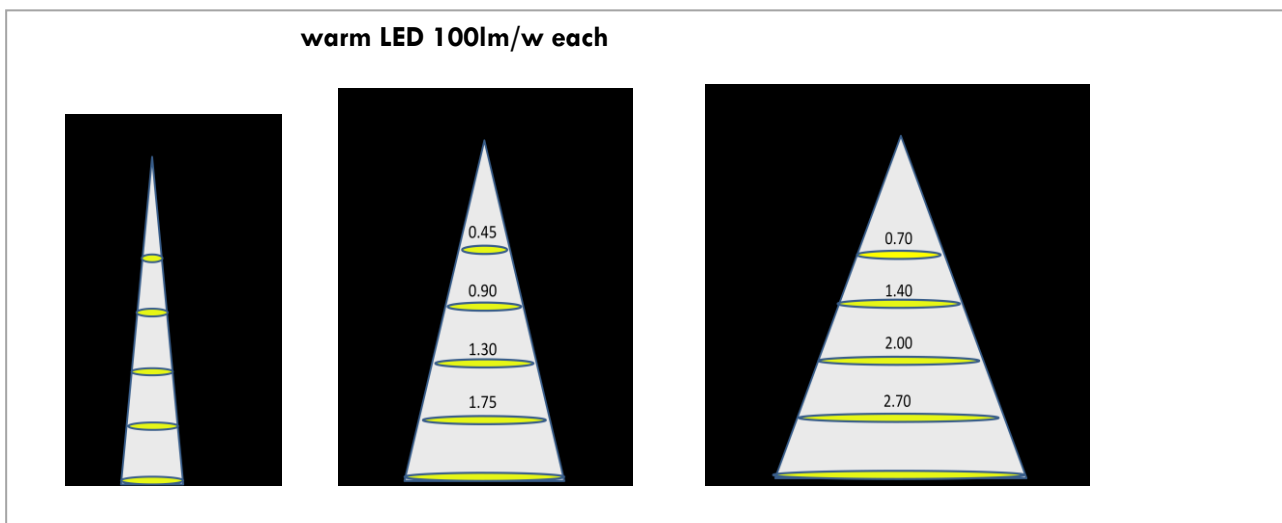
TECHNICAL DETAILS:

Voltage	24Vdc	
Power	19W	
Color Rendering Index	CRI > 80	
Ambient temperature	40°C	
Luminous flux without lenses		
Cold white	1500lm	
Natural white	1350lm	
Warm white	1350lm	
Luminous emission	10° - 24° - 38°	
K° White	Warm	2700°K
	Warm	3200°K
	Natural	4200°K
	Cold	5500°K

DIMENSIONS:



PHOTOMETRIES:



RAF MAXI

RAFMAXI is a LED lamp available with different kind of power LEDs. It is suitable for on-shore and off-shore applications in particular industrial locations, especially the ones at the risk of fire and/or explosions .

RAFMAXI is available with brackets and with adjustable junction for walls and poles.

The mechanical body and the heat sink are made of machined aluminum. The lamp is available anodized black or glazed aluminum.

RAFMAXI is available with 24 Vdc voltage, 48Vdc, 110Vac/dc or 230Vac, according to the kind of LED we need.

The lamp with 12 led and 24 Vdc voltage is equipped with a microprocessor which prevents from overheating through the control electronics system on board.

ATEX certification by request.



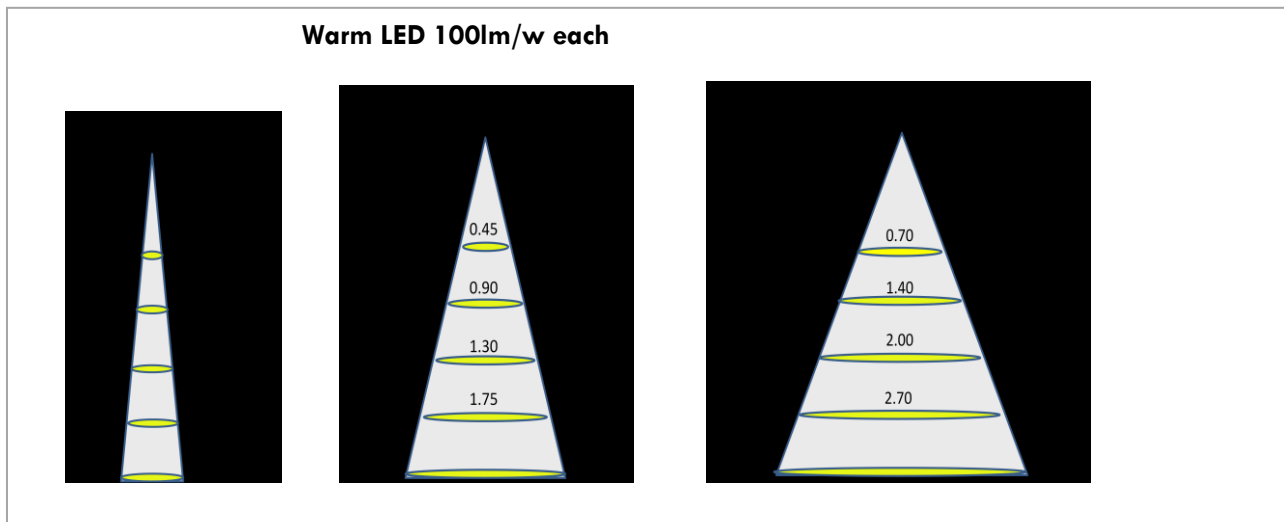
TECHNICAL DETAILS:

Voltage	24Vdc ,48 Vdc,110V ac/dc ,230Vac	
Power	da 6 a 25 Watt	
Color Rendering Index	CRI> 80	
Ambient temperature	40°C	
Luminous flux without lenses	from 500 to 1500lm	
Cold white	from 480 to 1350lm	
Natural white		
Luminous emission	from 10° to 60°	
K° white	Cold	5500°K
	Natural	4200°K
Available with cable clamp (lateral or posterior) or with M12 connector.		
<u>Every version of RAF MAXI is equipped with ATEX humidity sensor.</u>		

DIMENSIONS:

140 d.x70h

PHOTOMETRIES:



INCAS CMU

INCAS CMU is a LED ceiling lamp suitable for the replacement of 2x58W traditional ceiling lamps, particularly recommended for industrial settings.

INCAS CMU is equipped with brand new power LED and has a special recessed flood optic.

INCAS CMU is the perfect lamp for the direct lighting of industrial locations, gymnasiums, meeting rooms, public places with particularly high ceilings.

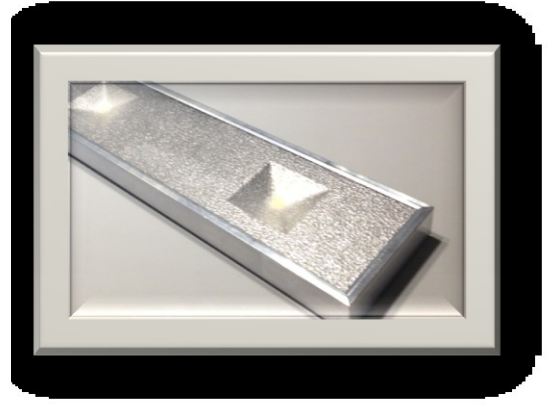
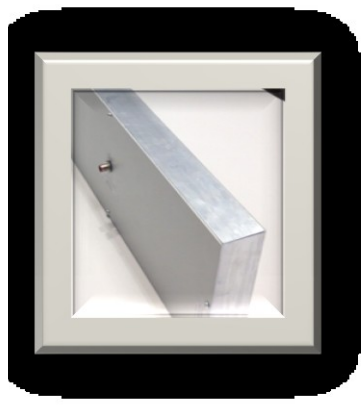
INCAS CMU thanks to its very low energy consumption, permits the replacement of two 58W fluorescent tubes with great improvements of the visual comfort and the light quality. LED lamps have also a higher color rendering index than the fluorescent ones.

INCAS CMU is made of dissipating aluminum, which can be painted with special techniques in order to improve the LED luminous performance.

INCAS CMU low voltage version is equipped with industrial standard IP68 M12 connector, in order to facilitate a fast installation.

PIN: 1(+24Vdc), 3 (-24Vdc), 5(ground).

Fixing systems available: steel cables or bus-bars by request.



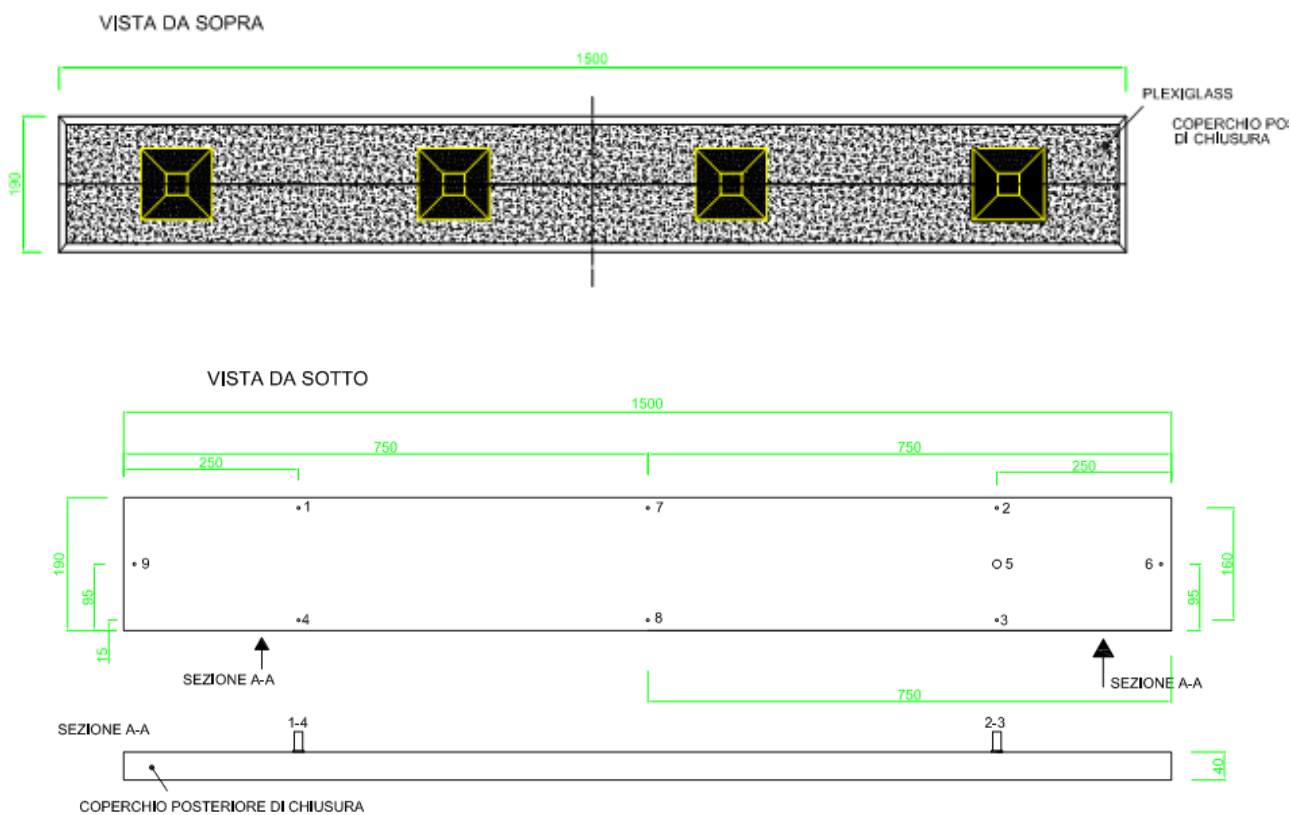
TECHNICAL DETAILS:

Voltage	24Vdc	
Power	55W	
Ambient temperature	25°C	
Luminous flux	5200lm	
Luminous emission	Collimatore ottico 120°	
Color rendering index	>80	
K° white	Caldo	3000°K
	Naturale	4000°K
Protection	IP65	

DIMENSIONS:

1500x190x50

INCAS 24 CMU (versione industriale)



MAYA REI

MAYA REI is a LED false-ceiling recessed lamp suitable for REI applications, in situations at risk of fire. The technology for which this lamps stand out permits a safe and easy installation without any protecting cap.

MAYA REI is the perfect lamp for the direct lighting of industrial locations, gymnasiums, meeting rooms, public places with particularly high false-ceilings.

MAYA REI thanks to its very low energy consumption, permits the replacement of traditional lamps with great improvements of the visual comfort and the light quality. LED lamps have also a higher color rendering index than the traditional ones.

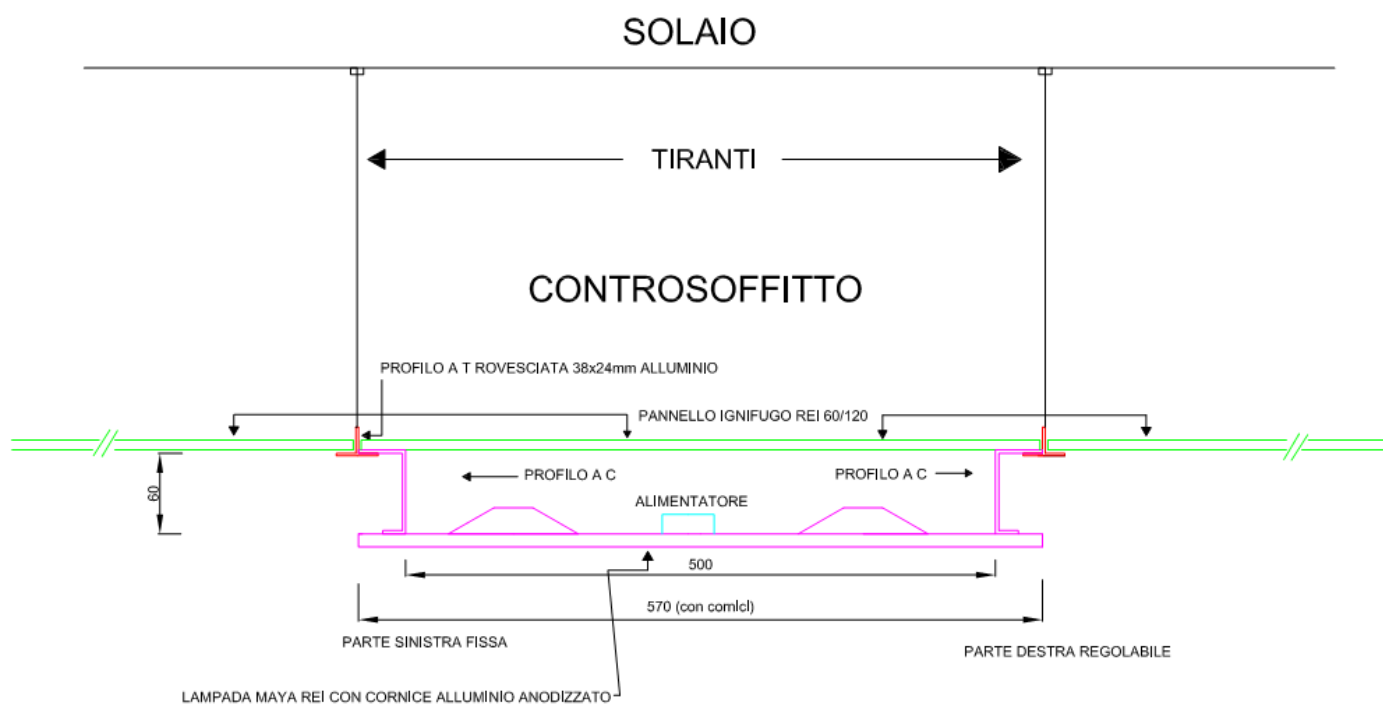
MAYA REI is made of aluminum and it has a frontal lightweight and resistant panel.



TECHNICAL DETAILS:

Voltage	230V	
Power	80W 110W	
Ambient temperature	25°C	
Luminous flux	7700lm 10600lm	
Current	Constant current	
Luminoe emissione	Optical collimator 120°	
K° white	Warm Natural	3200°K 4200°K

MAYA REI



B5142

B5142 is a brand new LED unit created with a micro-points technique that permits the realization of modular light devices.

B5142 is suitable for both direct and indirect illumination of working places and switchboards.

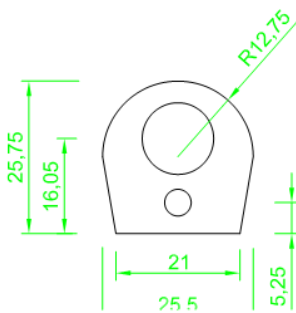
B5142 can be easily dimmed and electronically controlled by systems integrated in the industrial machines.



TECHNICAL DETAILS:

Voltage	24VDC	
Current	0.42 A/m	
Power	10 W/m	
Operating temperature	60°C	
Ambient temperature	-10°C +25°C	
Luminous flux:		
Natural white	945lm/m	
Warm white	930lm/m	
Luminous emission 120° lambertian		
K° white	Natural	4000°K
	Warm	3000°K
Standard units: 32cm , 62cm, 92cm, 122cm, 152cm, 182cm		
Strips can be divided into 5 cm sections. Lengths available by request.		
B5142 can be dimmed.		

DIMENSIONS:



Notes:

Available with M12 connectors.

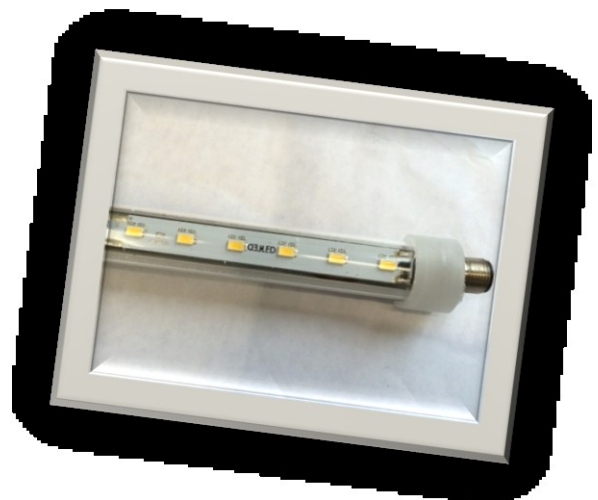
Available with fixing plates and magnets.

B563

B563 is a brand new LED unit that permits the realization of modular light devices of different lengths by request.

B563 is suitable for both direct and indirect illumination of working places and switchboards.

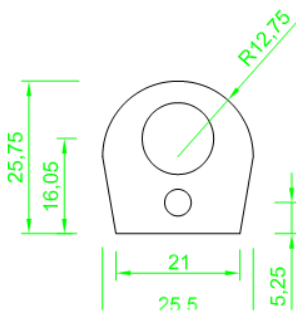
B563 can be easily dimmed and electronically controlled by systems integrated in the industrial machines.



TECHNICAL DETAILS:

Voltage	24VDC	
Current	1,25 A/m	
Power	30W/m	
Working temperature	60°C	
Ambient temperature	40°C	
Luminous intensity:		
Natural white	2800lm/m	
Warm white	2400lm/m	
Luminous emission 120° lambertian		
K° White	natural	4000°K
	warm	3000°K
Standard units:		
Strips can be divided into 6,6 cm sections. Lengths available by request.		
B563 can be dimmed.		

DIMENSIONS:



Notes:

Available with M12 connectors.

Available with fixing plates and magnets.

B563 IP65

B563-IP65 is a brand new LED IP65 unit that permits the realization of modular light devices of different lengths by request.

B563-IP65 is suitable for the illumination colonnades, gazebos, cornices, windows, banners and stairs in outdoor locations.

B563-IP65 can be easily dimmed and electronically controlled by building management domotic systems.

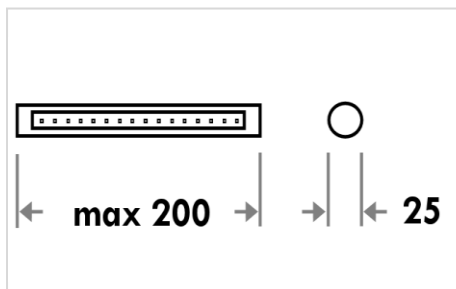
The standard version has a d. 25 mm PMMA tube, but it is also available a vetroborosilicate glass tube, more suitable for particular industrial settings, where current regulations require.



TECHNICAL DETAILS:

Voltage	24VDC	
Current	1.25 A/m	
Power	30W/m	
Operating temperature	60°C	
Ambient temperature	40°C	
Maximum 8 LED strips		
Luminous flux:		
Natural white	2800lm/m	
Warm white	2400lm/m	
Luminous emission 120° lambertian		
K° white	Natural	4000°K
	Warm	3000°K
Standard units: 40cm , 72cm, 104cm, 136cm, 168cm, 200cm		
B563-IP65 can be dimmed.		

DIMENSIONS:



Notes:

Available with M12 connectors and cable clamp.

Available with fixing plates and magnets.

HYDRA IP67

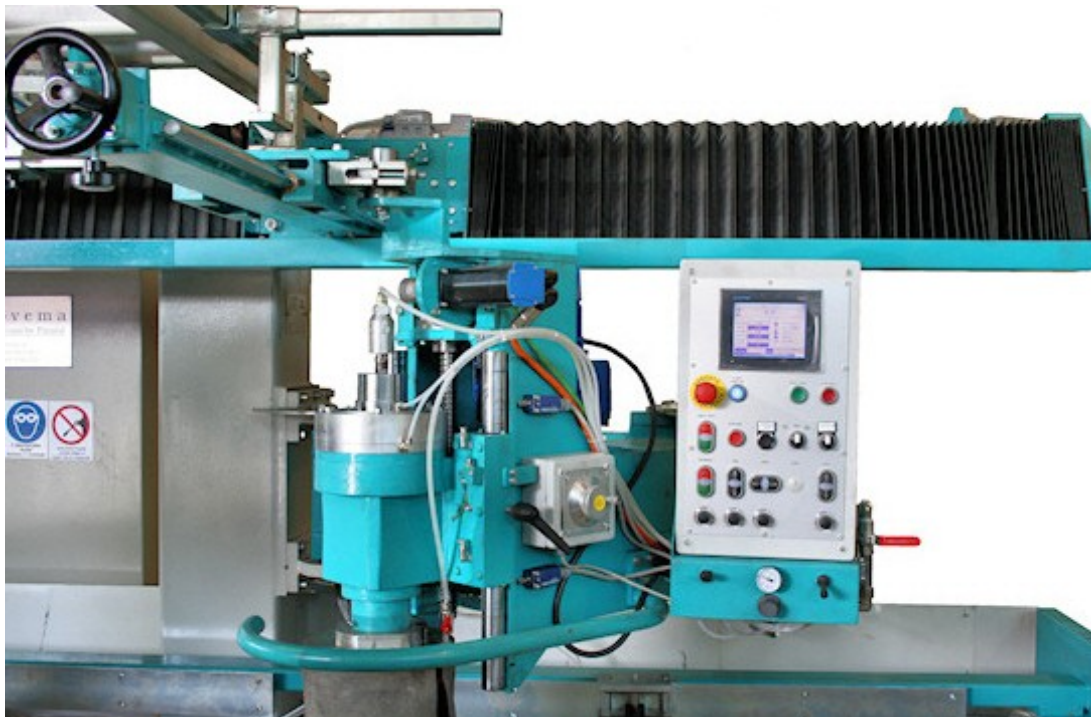
HYDRA IP67 is a brand new generation IP67 LED lamp suitable for outdoor applications.

HYDRA IP67 is perfect for the illumination of shaping machines which works in contact with aggressive liquids.

HYDRA IP67 can be easily dimmed and electronically controlled by domotic systems.

HYDRA IP67 has a 24 Vdc voltage and it is supplied with industrial standard IP68 M12 connector and its connection cable.

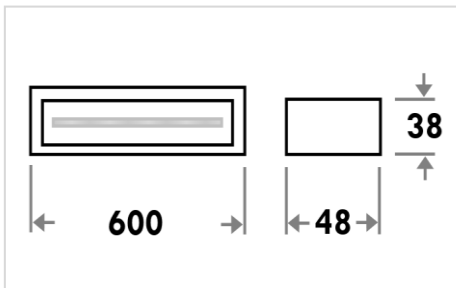
HYDRA IP67 is protected by a humidity sensor and a cable clamp, in order to avoid overheating and condensation.



TECHNICAL DETAILS:

Voltage	24VDC	
Current	1 A/mt 1.2A/m	
Power	24 W/m 29W/m	
Operating temperature	60°C	
Ambient temperature	40°C	
Maximum 8 LED strips		
Luminous flux:		
Natural white	2400lm/m - 2800lm/m	
Warm white	2100lm/m - 2400lm/m	
Luminous emission	120° lambertian	
K° white	Natural	4000°K
	Warm	3000°K

DIMENSIONS:



Notes: