



**We support your company  
to innovate your products and services**



# History

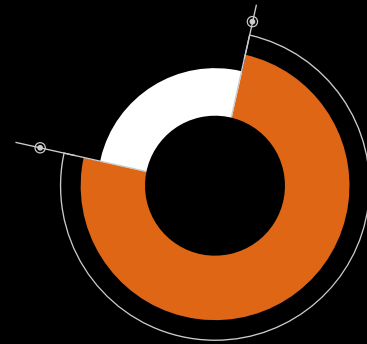
The company was founded in Modena in 1997 as a provider of engineering consultancy services.

Over the years he collaborates with many companies in the "Automatic Machines" sector which allow him to develop a strong know-how in design.

In 2015 it expanded its activities in the "Automotive" sector by collaborating from the very beginning with important companies in the sector.

In 2021, thanks to the know-how developed in the field of Engineering, he began operating in the "Agricultural Machinery" sector.

# Where we work



● **Out-Sourcing**

At the headquarters  
client company

● **In-Sourcing**

At the headquarters CIESSE

## Company values



### Professionalism

The company qualified personnel and relevant to the tasks to be performed. In addition to competence, we give a lot of weight to fairness for a transparent relationship with the customer.



### Flexibility

Thanks to years of experience we are able to satisfy small and medium-sized project modification requests without affecting costs and agreed delivery times.



### Training

We believe that the training of our staff is important for professional growth. We organize periodic courses on the tools we use in order not to miss the latest news on the market.



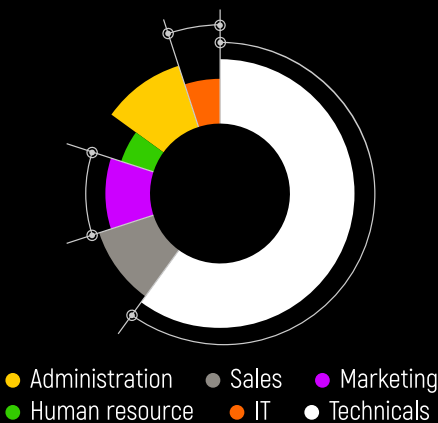
### Confidentiality

The company pays particular attention to the confidentiality of project information and data, enjoys a relationship of trust with its customers.

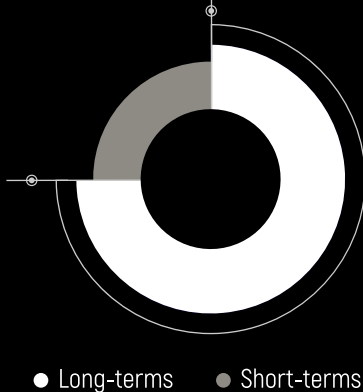


# Company organization

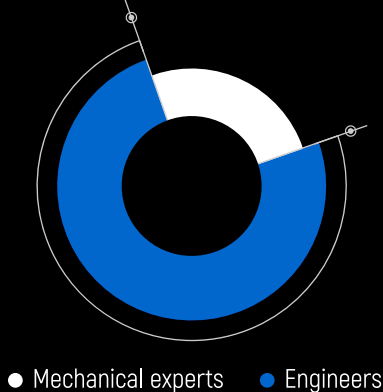
Corporate organic distribution



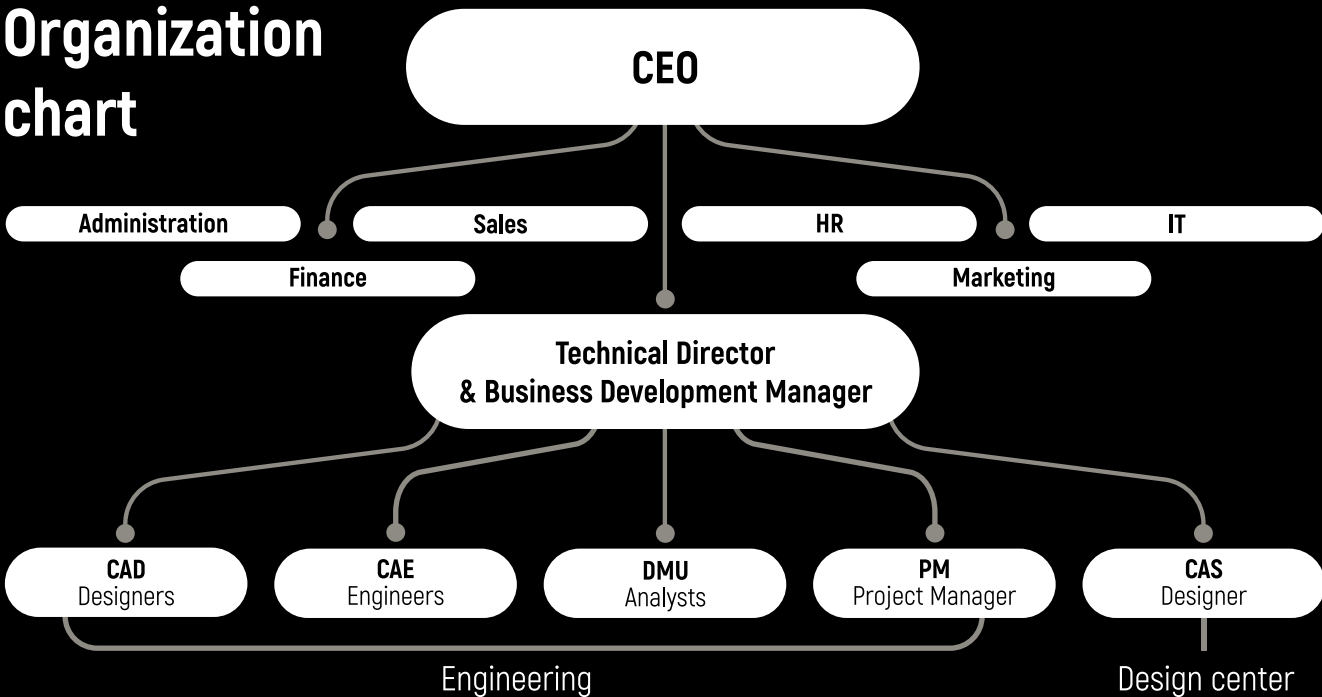
Projects



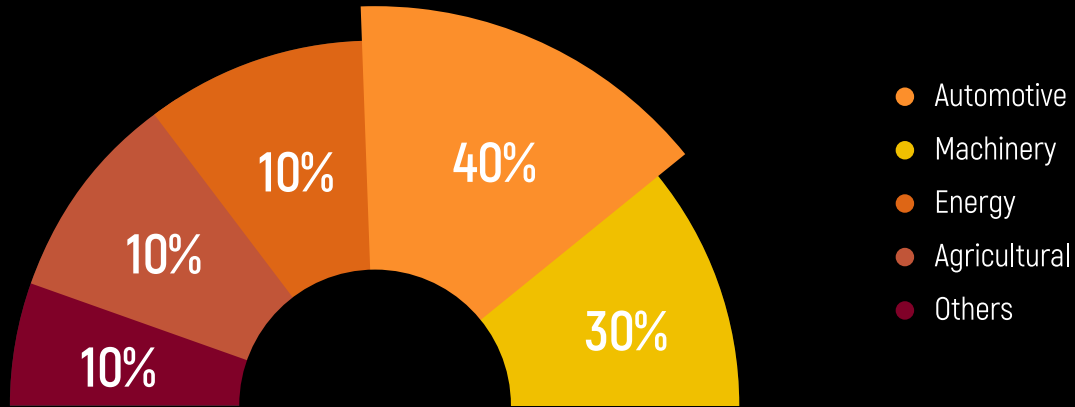
Average of working experience (4/5 years)



## Organization chart



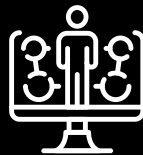
# Reference areas



## What we do



**Engineering**  
CAD, CAE e CAS



**Technology**  
Research and development



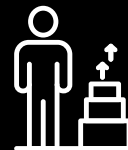
**Concept Design**  
Schematization and rendering



**Training**  
Courses OnSite/Online: CAD, CAE, CAS



**Data acquisition**  
Feasibility study



**Manufacturing**

# Services



## Engineering

To site of client or to site Ciesse Progettazioni

**CAD 3D, 3DA, 2D:** Catia, Unigraphics, Creo Parametric, Solidworks, Inventor, SolidEdge

**CAS:** Alias, NX, Catia

**CAE:** FEM Simcenter Nastran (Siemens NX), CFD (Star-CD, Star-CCM+), MoldFlow, Casting simulations, GT-Power (noise and emissions)

**Analisi DMU** (Digital MockUp, Distance and interference analysis)

### Project Management

**Co-Design:** CAD (3D e 2D) → CAE (FEM) → Project Management → DFMEA

**Co-Engineering:** Design → Development → Supply Chain Management → Production → Assembly and Testing → Delivery

**PLM Support:** Teamcenter, Windchill, Enovia, Documenta, Pro.File, Vault

**Reverse Engineering:** Scanning of components and surface regeneration

**Rendering:** Photorealistic rendering for project presentation

**Marking CE:** Marking in accordance with the Machinery Directive 2006/42/CE

**Technical documentation:** Use and maintenance manuals, spare parts catalogs, technical sheets, assembly instructions



## **Design center**

To site of client or to site Ciesse Progettazioni

**CAS:** Alias, NX, Catia

**Learning:** to site of client or online, for companies and individuals, with delivery of the video recording and certificate

**Courses CAS:** Alias



## **Manufacturing**

Rapid prototyping and small batch production

**3D Printing:** Plastic and Metal

**CNC Rapid Prototype:** 3-4-5 Axis

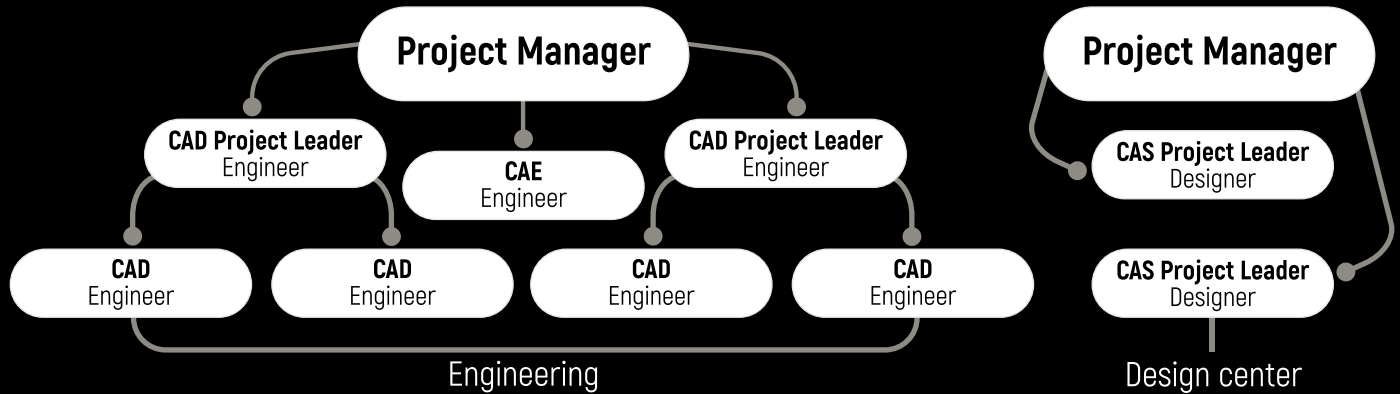
**Molding:** Vacuum casting-silicone and Injection

**Sheet Metal Fabrication:** Laser cutting, bending and stamping

# From a single resource to an entire technical team

Exactly what you really need to push ahead those projects missing internal resources.

The capacity to scale up the collaboration at any time.



## Why choose Ciesse Progettazioni

- ✓ **Support of work overloads** that would not justify the increase in human resources
- ✓ **Support in the development of innovative projects**
- ✓ **Increased design speed**
- ✓ **Design quality assurance**
- ✓ **Support in the development of complex projects**
- ✓ **Support from professional team**
- ✓ **Support** in various engineering issues
- ✓ **Physical delivery** of designed components



# Contacts

**Ciesse Progettazioni Srl** - P.IVA e C.F. 02400820367

---



Via F. Malavolti, 43/B  
41122 Modena (Italy)



[www.ciesseprogettazioni.it](http://www.ciesseprogettazioni.it)  
[info@ciesseprogettazioni.it](mailto:info@ciesseprogettazioni.it)



+39 059 313071  
Mon-Fri: 08:00am / 6:00pm



## Vision

In a world where innovation is essential to keep up with the times, it is better to have an effective and competent technical development partner at your side.

Partnership that can lead to a competitive advantage such as to become a leader in its reference sector.

## Mission

To be the best technical partners of companies wishing to grow by innovating and improving their products and services.

Support the technical departments in moments with greater workload.