

# materialSUITE™

Case Study



## MES and MTM

Production progress  
and human time detection



materialSUITE™  
Case Study



# MES and MTM

## Manual payment and time recording on the go

Monitor production progress starting with a Web and Mobile App



Tommasin & C. S.r.l. is an Italian company specialised in metal contractions, specifically dish bases; has adhered to the incentives provided for the 4.0 industry with the aim of optimising production processes using software capable of speeding up numerous activities, previously managed by incorrectly computerised supports. The company, which today has important growth goals and aspirations, can count on highly qualified personnel and important certifications including ASME Pressure Vessel Manufacturing.

## mySUITE™

Analyse, check and communicate within the factory thanks to the super stopwatch in mySUITE™.

The mySUITE™ software, for product process management on mobile devices, allows you to collect and process data and analyse it thanks to simple dashboards and promptly intervene in the decision making process.

Each operator equipped with an Android app will be able to enter using the intuitive start & stop system, locate raw materials distributed in the various plants and receive communications and notifications thanks to the push notification system.



### Objectives

Increase productivity and reduce waste.



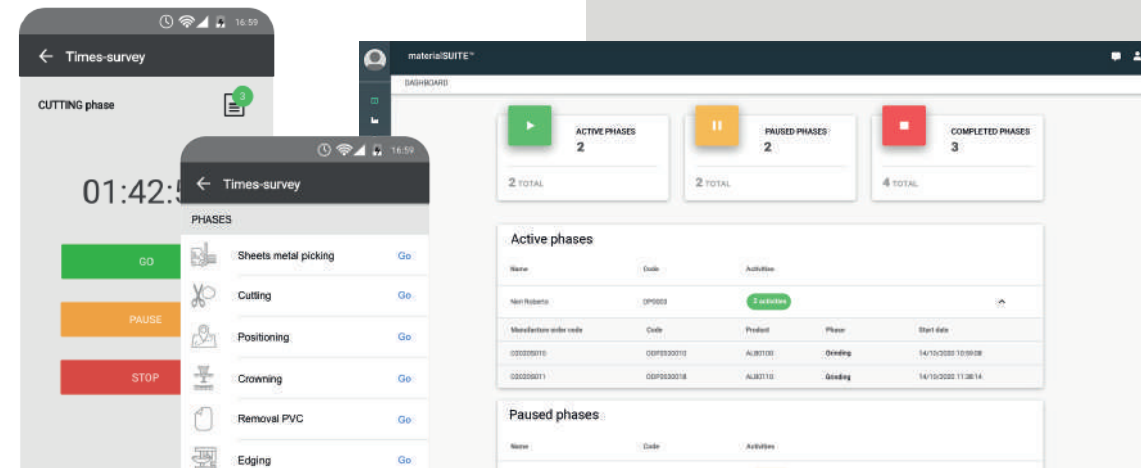
### Solutions

Access to management control via a cloud and web application, with data transmission from the mobile app thanks to the API. Integration with the NTS Business Cube management software.



### Benefits

Waste reduction, better control of times and potential production interruption identification; faster speed in information exchange between employees and decision makers.



materialSUITE™

Case Study



WMS

Warehouse management



materialSUITE™

Case Study



## The warehouse becomes intelligent

Intuitive interfaces to manage complex warehouses



Founded in Parma in 1923, Greci represents an Italian reference point in the food sector: initially specialised in processing tomato, today the excel in the ready-made gastronomy sector, always guaranteeing Italian quality and tradition. The union between tradition and innovation has allowed them to invest in the optimisation of increasingly cutting-edge production processes.

## WMS Module

Intelligent storage and picking precision.

The WMS module effectively controls the warehouse by combining data communication with the SAP software, from the arrival of goods to the picking phase, from sending notifications to the operators for the collection mission to the arranged warehouse, to sending notifications for packaging.

One of the main features is the algorithm that regulates the storage of raw materials based on availability and expiry of the goods; goods pick-up and deposit missions are then generated from a pick list following the order from the SAP system, which can be viewed from the mobile app on the operator's device.



### Objectives

Manage the goods in the warehouse according to availability and perishability.



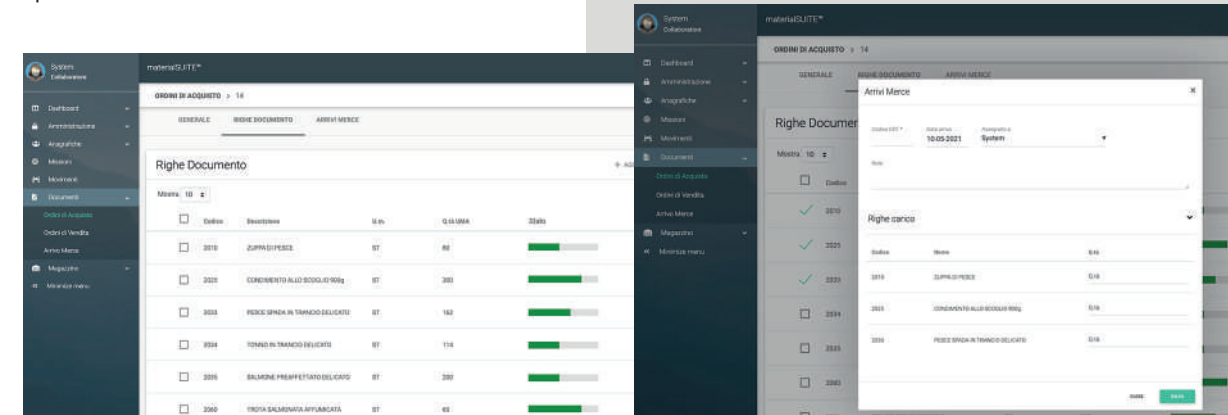
### Solutions

Development of a WMS module, a web app and a mobile app for effective inventory control, combining data communication with SAP software: from the goods arrival to picking.



### Benefits

Production process optimisation and waste reduction related to perishable goods.



# materialSUITE™

Case Study

 SCH  
Scheduling



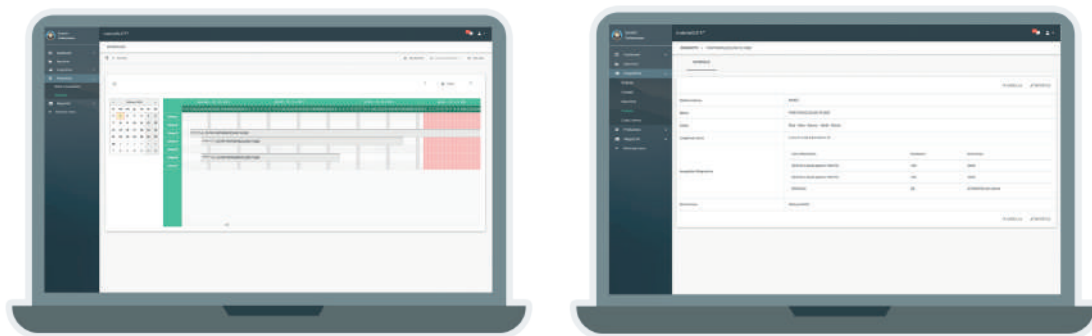
materialSUITE™  
Case Study



# SCH

## Visual programming of manufacturing production processes software

SCH Module linked to production and logistics



Profilplast of Ramadan Cesare & C. snc has been working with custom manufacturing of equipment for extrusion of plastic material and construction of molds, calibrators, rigid and semi-rigid PVC profiles, as well as agricultural products, since 1977. Thanks to the experience acquired in their sector, they are able to provide a customised and maximum precision solution in short timeframes.

## SCH Module

Program manufacturing phases and production processes quickly and intuitively.

Program, postpone and define work phases quickly thanks to the visual management of the work flow. The scheduler software created for Profilplast di Ramadan Cesare & C. Snc allows better order and production phase management, and guarantees meeting expected delivery times.



### Objectives

Optimise order scheduling and meet delivery times.



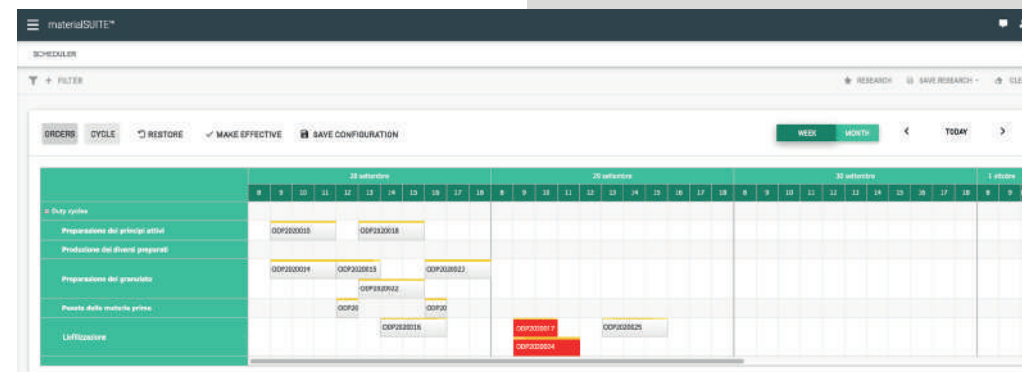
### Solutions

Development of a customised scheduler with functions that define order priority, expiration times, set-up times, manual labor availability and characteristics of the production process.



### Benefits

Preventive identification of times and criticalities, production sequence simulation and precise preventive estimate of delivery dates.



materialSUITE™  
Case Study



LINK 4.0

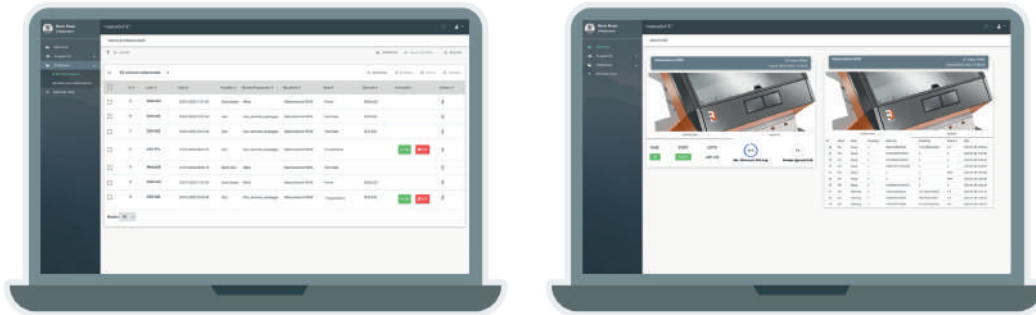
Bidirectionality and software

materialSUITE™  
Case Study

# LINK 4.0

## materialSUITE™ for the 4.0 module

Optimise sorting with software for 4.0



Semedorato S.r.l. represents an authentic and original brewery located in the characteristic province of Caltanissetta. The spirit of the Sicilian culture is inevitably found in the flavours of their beers: thanks to the experience consolidated over the years, they have also conquered foreign territory by distributing in France, the Netherlands, England, Costa Rica, USA, Canada, Sweden, Switzerland, Denmark, Greece, Hungary, Russia, Panama and the Caribbean Islands.

## 4.0 software installation for production machinery

Industry 4.0 digitalisation course.

The software released for Semedorato S.r.l. included bidirectional interconnection with the purchased machinery; the remote control function and the OPC-UA standard, specifically, it made it possible to configure and connect all other 4.0 devices present in the factory.

To complete the project we have a series of set alarms, from machinery stops for cleaning to the management of recipe uploads and initialisation.



### Objectives

Transform your factory into 4.0 by connecting new machinery and new software according to the Industry 4.0 plan.



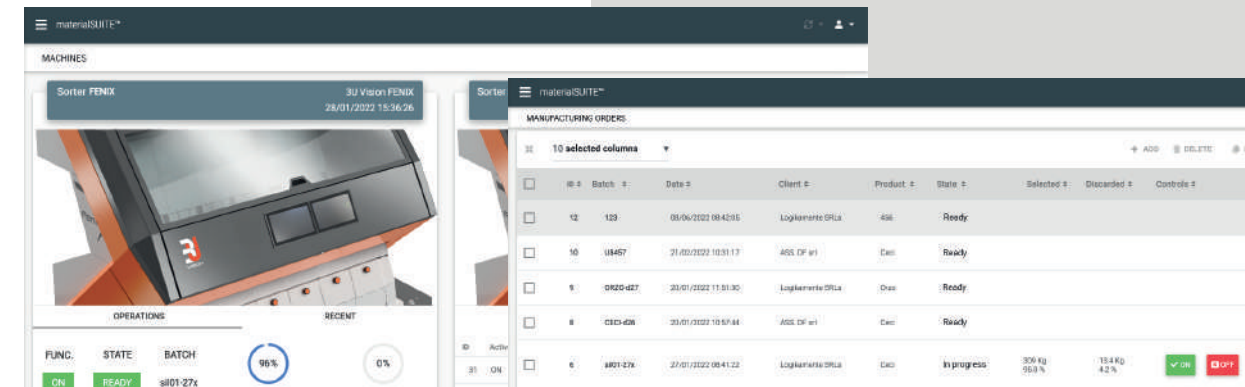
### Solutions

The materialSUITE™ software module release for 4.0 guarantees: bidirectional interconnection, remote control and generation of insights relating to the production processes.



### Benefits

Business systems digitalisation and optimisation of the production process: agile management and batch tracking based on operations selection and understanding of waste quantity.





# materialSUITE™

Case Study



## TAILORED

Product configurator  
and estimator



materialSUITE™  
Case Study



## Product configurator

to formulate the most competitive economic quotation



Tommasin & C. S.r.l. is an Italian company specialising in metal constructions, specifically rounded bottoms; they adhered to the incentives provided for the industry 4.0 with the aim of optimising production processes the software capable of speeding up various activities, previously managed by incorrectly computerised supports. The company, which today has important growth goals and aspirations, can count on highly qualified personnel and important certifications including ASME Pressure Vessel Manufacturing.

## Production data acquisition and analysis

How production data can improve sales starting from the configurator.

The MES Module and the mySUITE™ app have allowed a database to be created, that is transferred, in a structured manner, to a final accounting system.

The output generated is the formulation of the most competitive economic quotation, in relation to actual costs and times to estimate the commissioning of orders.



### Objectives

Formulate the best quotation in relation to delivery times and costs generated for the order creation.



### Solutions

Web app development, connected to an algorithm that processes the information necessary to support quotes similar to those stored in the database as well as construction times and costs calculation.



### Benefits

Reduced waiting times for a quote request; better correspondence between quotations and final accounts of orders; precise knowledge of the times for each phase; competitive offers on price starting from production costs.

