



# CIERRE

Cierre active in subcontracting electronics since 1970 offering complete solutions and diversified for each customer.

Cierre differs for the synergy of supply, efficiency of operations, customer focus, improvement and innovation.

Cierre EXCEL's mission is to become a reference point and to ensure continuity and development work.

Offering a comprehensive mix of products and services, promote the improvement and efficiency of processes, operating environment and safety.

## CIERRE

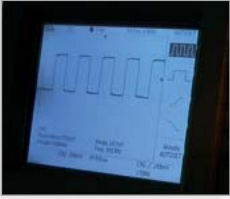
Via A. Moro, 7  
SERRAVALLE (Fe) - ITALY  
Tel. 0532-876811  
Fax 0532-834471  
www.cierre.net  
info@cierre.net  
Azienda certificata  
UNI-EN-ISO9001



### ELECTRONIC MANUFACTURING SERVICE

**PARTNERS COMPLETE.  
RELIABLE.  
VALUE**

## Design



Cierre has an offer based on the production of cables, cards, paintings and assembly of power modules, and is completed with various value added services including Materials Management C / L or C / D, design or Codesign,

Logistics Management input, Kanban, Freepass.

Cierre is committed to becoming a true partner for the customer, sharing strategies and technological potential.



Cierre offers a service that starts from the collection of technical specifications, feasibility analysis follows the research and development, and extends to the creation of proto types, industrialization, trials and tests,

and until the pre-construction document preparation, production testing, testing type.

The knowledge of the specific capabilities and facilitates the coordination of processes in the transition to production.

### Design to Produce

Cierre provides technical design and/or industrialization focused on achieving the best balance of costs and benefits of the final product, as well as considering or reconsidering its manufacture of

all components of the product, process, and the organization concerned.

This allows complete control of all costs directly involved in the business model adopted.

### Design to Cost

## Certifications



Cierre adopted a systematic optimization of resources, attention to waste, and a conscious exploitation of the resources available. Work vigorously for managing the entire process to occur with

minimal environmental impact and preventing pollution.

Cierre has obtained the environmental certification ISO 14001 for its production sites in Serravalle (FE) and Castelguelfo (BO), according to the pattern 14001.



Cierre Considers the quality of performance, and has instituted a policy that aims to get products to fully meet and possibly exceed customer expectations, and continuous improvement of the service.

Cierre encourages the involvement of staff, proposals and suggestions in order to prevent problems and ensure customer satisfaction.

Cierre Management System is certified ISO9001 and ISO14001 from TÜV Italy1.



Cierre can produce Harnesses, Flat Cable, molded hotmelt, UL - CSA, markets for U.S. and CANADA. The file certification Cierre is n ° E343695.

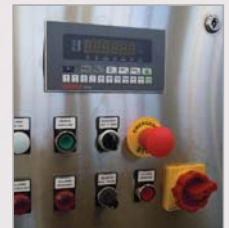
The framework is ZPFW2 WIRING harnesses and ZPFW8. The certification is initiated by Cierre in order to identify the consistency of each component of raw material, and to ensure its traceability of each production lot. Subsequently, the wiring is marked RH (Recognized) with original labels UL recognition.

## Power electronics

- Solar inverters and vector assembly
- Uninterruptible Power Supplies
- Battery Chargers, Power Supplies
- Power Modules, Radiators, IGBT, SCR, Transistors
- Crane Mounting with up to 20 quintals
- Assembling steel structures, structures
- Electrical tests, stiffness, Burnin
- Materials Management Full, Jobs, and Deposit
- Tightening torque in controlled
- Kanban, Freepass

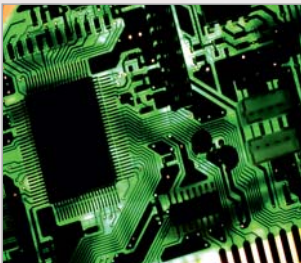
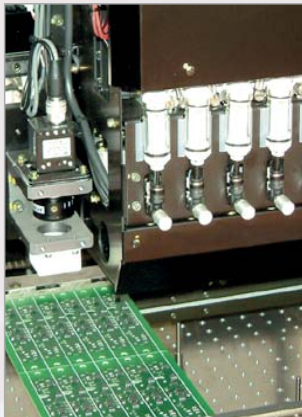
## Electrical panels

- Electrical panels for automation and power distribution
- Power cables up to 240 sq.
- Copper bars, rods and lamellar preinsulated, braided
- PLC Siemens, Omron, Schneider
- achievements ATEX
- Functional testing, burnin
- Design, engineering
- PLC software design
- Materials Management Full, Jobs and Luggage
- Kanban, Freepass



## Electronic Boards

- Production of electronic boards SMT and PTH
- Prototype, pre-series
- Pick & Place from 0201 to BGA
- SnPb and lead-free processing
- Functional testing, burnin
- Potting, coating, passivation
- Programming PAL, GAL, uP
- Design, engineering
- Materials Management Full, Jobs and Luggage
- Kanban, Freepass



## Cables

- Production Wiring, Cables, Ropes
- Automatic line cutting, stripping, crimping, and brand-jet
- Processing multipolar cables and cords from 0.22 to 240 sqmm
- Cables PVC, Tefzel, Teflon, Silicone, Afumex
- Marking jet or hot line
- Working flat cables
- Application "Splice" leads to rigid
- Molding cables and connectors
- Oil-resistant cables - Diving - flexing
- Electrical tests, diameter control
- Kanban, Freepass

