

**WHERE HIGH QUALITY HARNESSES
ARE REQUIRED, THERE YOU CAN FIND...**



ELECTRONIC HARNESSES

PRODUCTION

FOR ANY INDUSTRIAL AMBIT

GALMAR Snc

**Via Circonvallazione sud, 12
40062 MOLINELLA (BO)**

**TEL.: 0039 051 887088
FAX: 0039 051 882588
E-mail: info@galmar.net**

Web: www.galmar.net



COMPANY



Since 1979 presents on the market of **electronic harnesses subcontracting**,
certified to ISO 9001:2000 since 2003,
with a staff of 35 experienced operators,
and a surface factory of 3,000 s.m.,
GALMAR is specialised in electronic cables assembling
for any application.

GALMAR is your ideal partner
to resolve every harnesses problem
in **any industrial ambit**:

- ELECTROMEDICAL
- ELECTRODENTAL
- PACKAGING
- INSTRUMENTATION
- RAILWAY
- BANKING
- TELECOMMUNICATIONS
- DOMOTIC
- SECURITY
- ENERGY
- NAVAL
- etc..



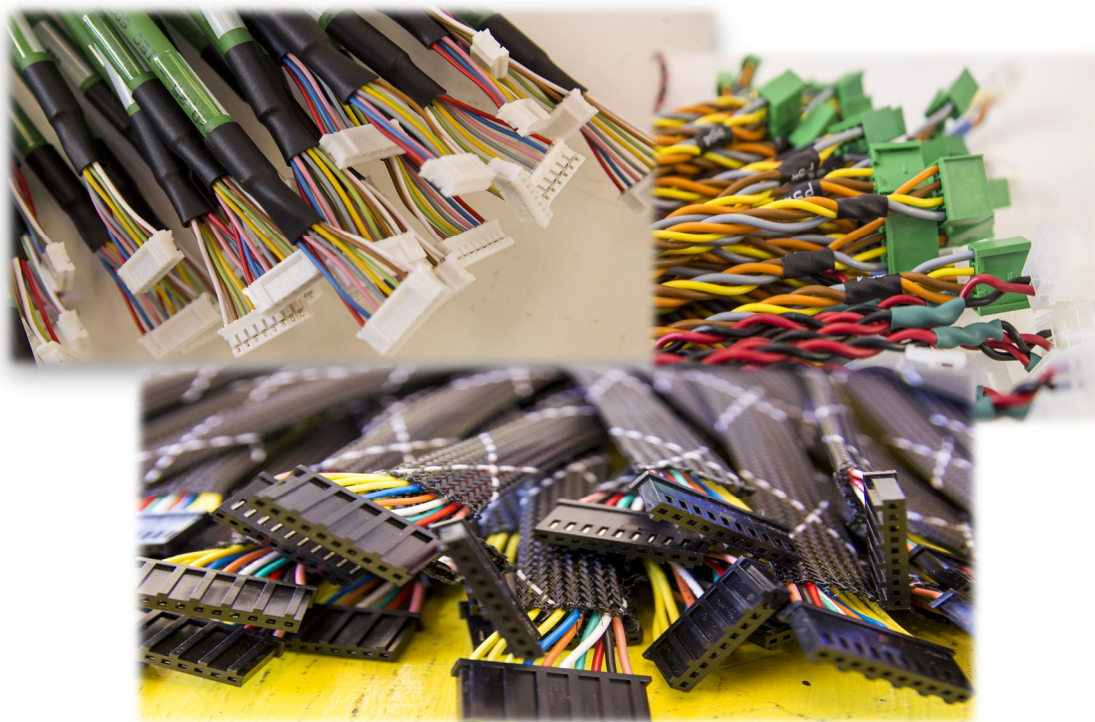
PROFILE



The company mission, aimed to exceed customer requirements, has led to a continuous development of the Quality System permitted **GALMAR** to obtain, on December 2003, the Quality Certification according to UNI EN ISO 9001:2000.

We always think of **our harnesses as the heart of machines**, that's why GALMAR constant goal is to assure **customers satisfaction** with a higher **reliability** of our final products.

This philosophy allowed **GALMAR** to operate successfully within electronic fields such as medical, dental and railways, and anywhere an electronic harness demands a total quality.



GALMAR has always followed up
a philosophy of constant technological renovation,
both in machinery and in the **factory information network**.

Investments have been made in order to keep competitiveness on the
market for **quality, fast delivering and flexible production**.

GALMAR is able to produce both important and little batches,
on customers requirements, with their own materials
or with total sup-
ply of goods.



Our cycle of production starts up with the input of production data in the factory information network, from which each department can obtain information about the realisation of products.

The **cutting** of cables department counts on computer control automatic machines (**KOMAX - SCHLEUNIGER**);

then production goes on with **crimping** by **Quality Monitor** latest generation machines (**TYCO - MOLEX - JST - CEMBRE**).

After the final **assembling** of parts, the process ends with **testing** realised by personalized software.

This production system allows to keep in control each phase of production.



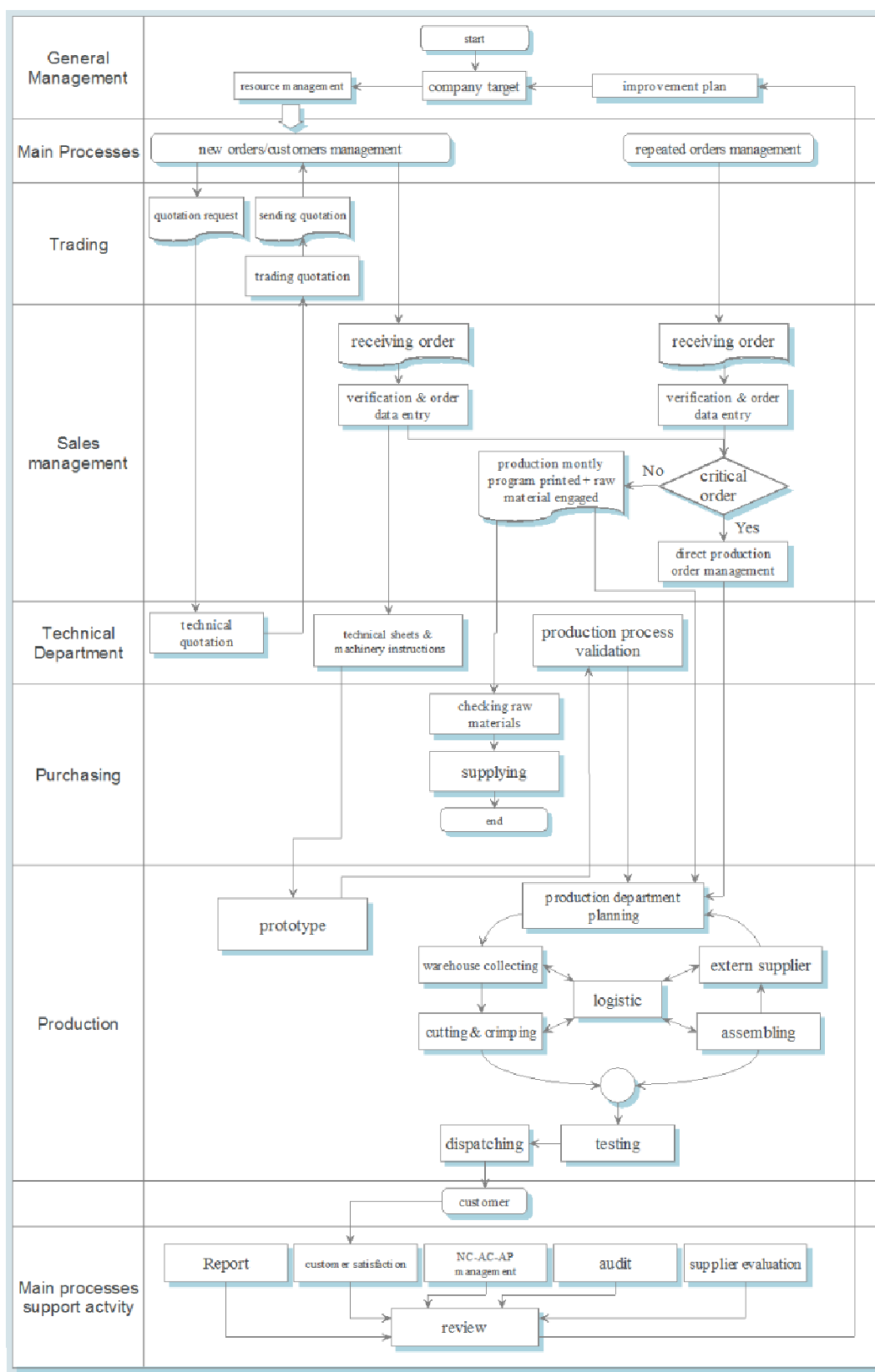
The selection and the control on purchased raw materials and suppliers are an important element of Company Quality System, that is object of certification.

Suppliers are considered as an important resource because a well structured supply system can satisfy company requirements and increase in value its activity.

Our main suppliers are TYCO, MOLEX, PANDUIT, BELDEN, CONNECTOR, SCHAFFNER, WAGO, PATELEC, WEIDMULLER, OMEGA, OK, CONNEI, BURNDY, JST, ETC..

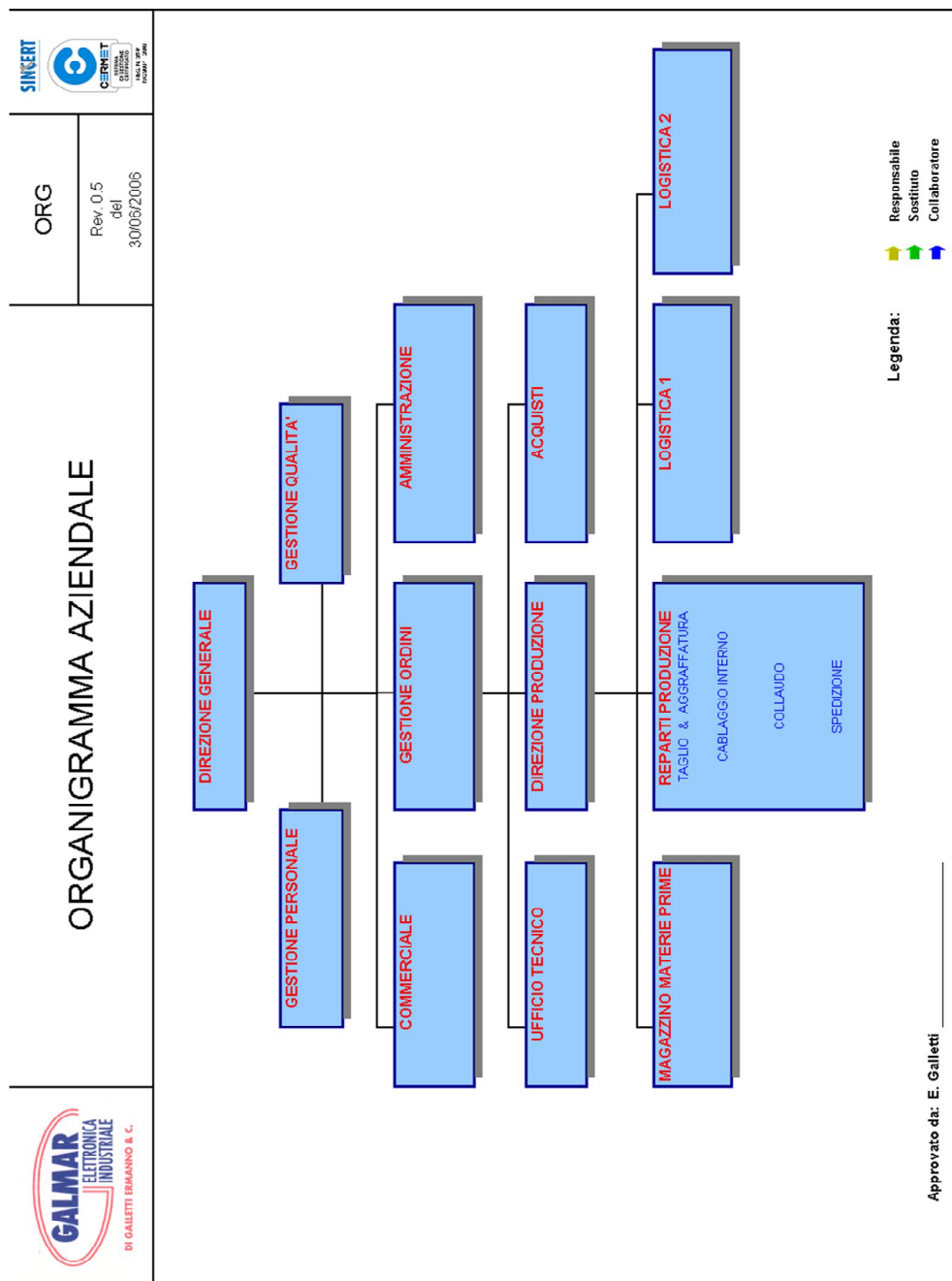


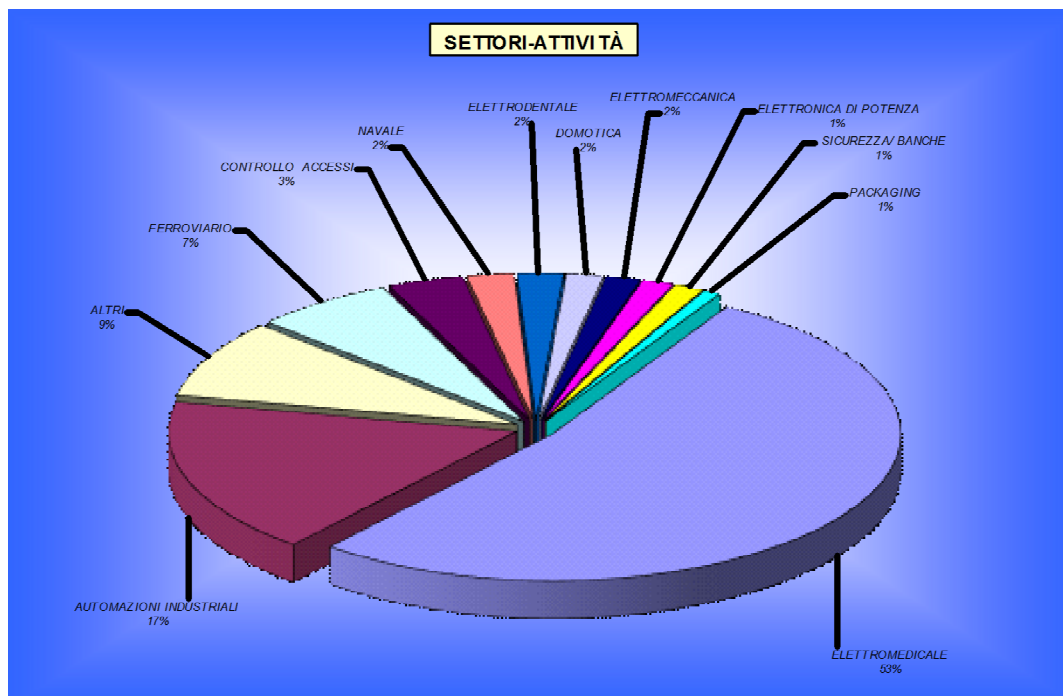
Processes Map



QUALITY SYSTEM

Organisation Chart





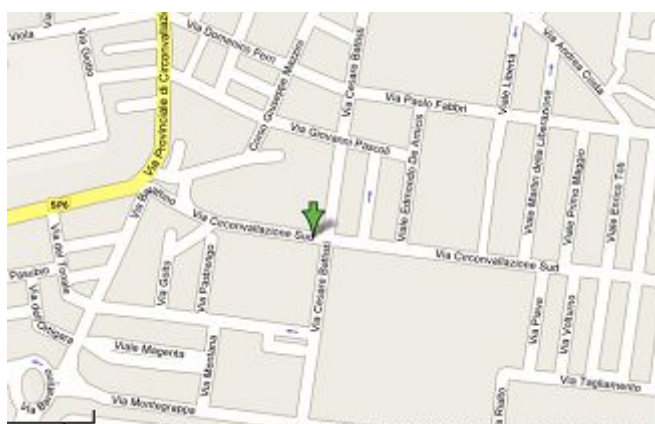
OUR MAIN CUSTOMERS:

GAMBRO SPA
GAMBRO LUNDIA S.A.
COROB SPA
SORIN GROUP DEUTSCHLAND GMBH
STOROPACK DEUTSCHLAND GMBH, Co.KG
REGLOPLAS AG. SWITZERLAND
SIGMA SPA
CEFLA SCRL
ALSTOM TRANSPORT SPA
SWIDENT SRL
PROMED SRL
EVEREX SRL
MICROGATE SRL
ROTOTYPE SRL

GALMAR
ELETTRONICA
INDUSTRIALE
DI GALLETTI ERMANNO & C.

VIA CIRCONVALLAZIONE SUD nr. 12

province of BOLOGNA



**Via Circonvallazione sud, 12
40062 MOLINELLA (BO)**

TEL.: 0039 051 887088
FAX: 0039 051 882588
E-mail: info@galmar.net

Web: www.galmar.net

