



MIX S.r.l.

QUALITY MANAGEMENT SYSTEM
ISO 9001:2008 • ISO 14001:2004 • BS OHSAS 18001:2007

MIXING SYSTEMS AND
COMPONENTS FOR PLANTS

LOADING BELLOWS XIMIX® TYPE SC.301



COMPACT DRIVE
Easy Maintenance access

MODULAR DESIGN
◀ with filter predisposition
with assembled filter ▶



BLOWERS
Variety of power options



MODULAR VALVE
*Positive pressure /
negative pressure control*
It provides pressure
balance at the duct,
and it prevents possible
pressure damage
or deformation



**MODULAR
REINFORCED
SHEATH**
*Metal wire for
containment and guide*

**RAI PROTECTION
FOR VALVE**



**MODULAR AUTO-BRAKING
GEAR SYSTEM**

*It provides the highest safety and accuracy while
rising up and going down the loading spout*



**ELECTRIC CONTROL
BOARD (optional)**

With printed circuit board



**PENDANT
CONTROL PUSH
BUTTON (optional)**

- Graphic interface
with LED indicator
- Phase check
(motor Rotation
controller with
LED indicator)

INCORPORATED FILTER

- Compact
- Variety of modular filtering surfaces
- Pneumatic pulse jet cleaning



FILTERING ELEMENTS

- Easy access to filtering elements
- Variety of filtering units

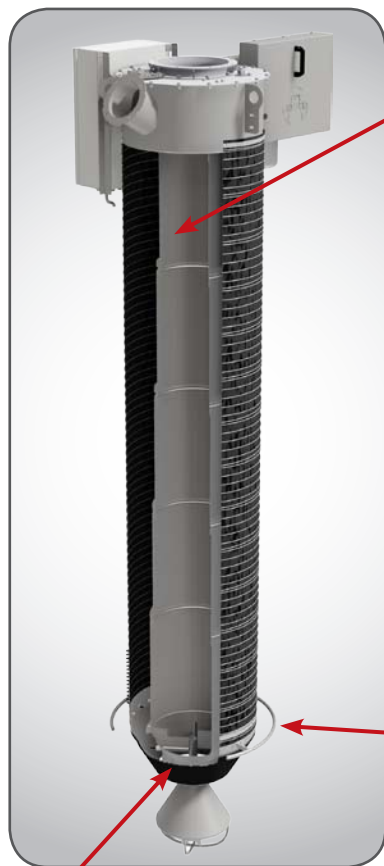
6 TRACTION CABLES

- **single cable** option with protected pulley
- **three cables** option with external pulley (Bulk Material contact free with pulley)



MODULAR HINGED JOIN

Higher shifting and swinging angle for safer truck connection



TELESCOPIC TUBES

- Perfect sliding
- Maximum product fall by the increasing tube diameter
- Minimum wear
- Reduction of the powder generation

MODULAR SCHACKLE

Accurate targeting for the discharge point

MODULAR POSITIONING CONE

Special design conic rubber coating provides accurate targeting and maximum sealing

7 MODULAR CLOSING CONE

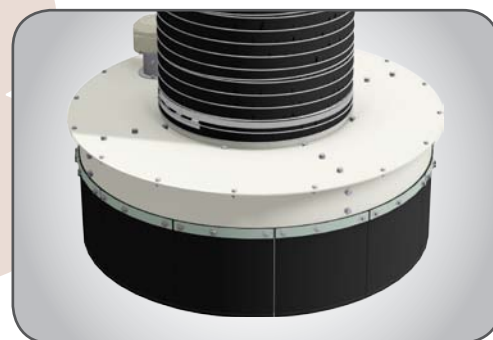
It prevents material leak while operating the loading spout phase of rising up or going down



MODULAR LEVEL INDICATOR

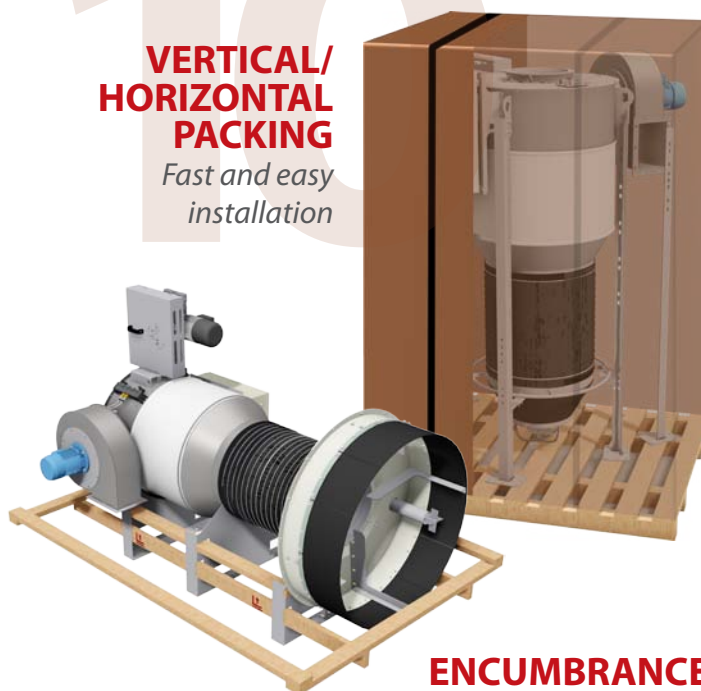
8 SKIRT SOLUTION FOR OPEN TRUCK

Maximum product flow



9 VERTICAL/HORIZONTAL PACKING

Fast and easy installation



ENCUMBRANCE

Reduction dimension